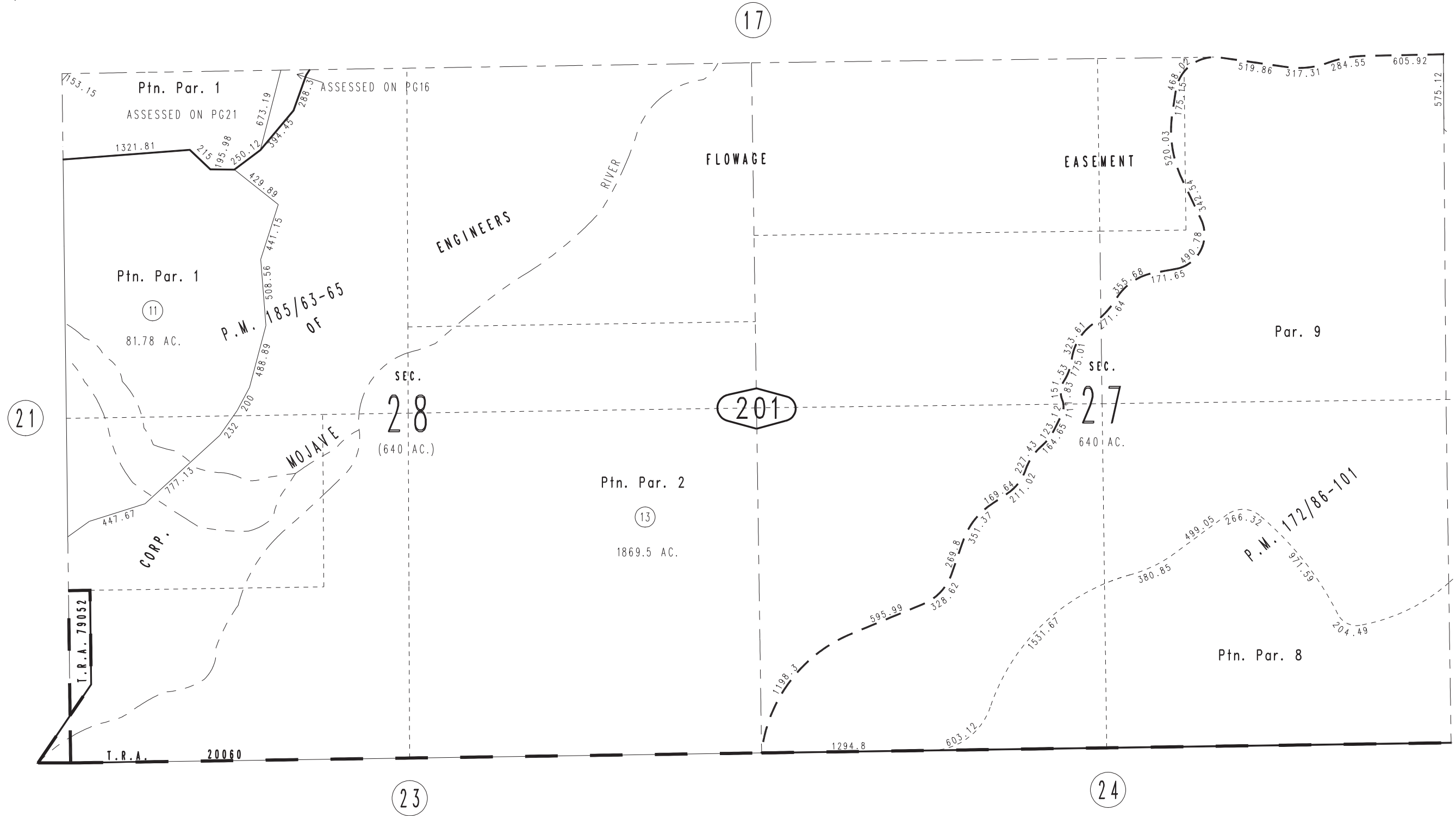
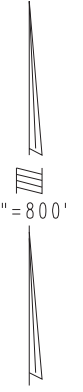


THIS MAP IS FOR THE PURPOSE
OF AD VALOREM TAXATION ONLY.

Sec.27&28, T.3N.,R.4W., S.B.B.&M.

City of Hesperia
Tax Rate Area
20060 79052

0357-20



April 2004

Ptn. Parcel Map No. 15178, P.M. 185/63-65
Ptn. Parcel Map No. 13471, P.M. 172/86-101

Assessor's Map
Book 0357 Page 20
San Bernardino County

REVISED
03/30/21 GW
07/13/23 KC