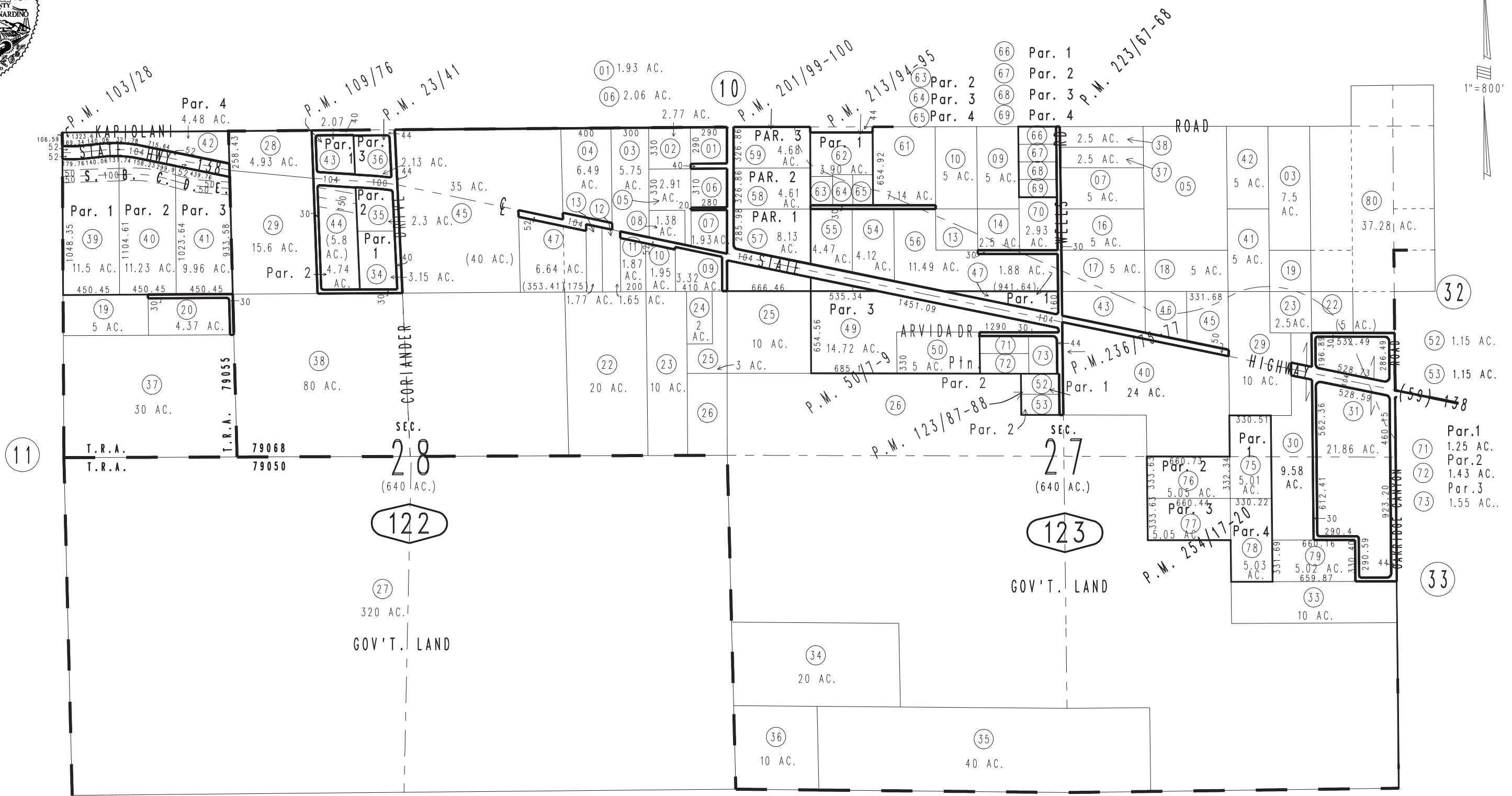
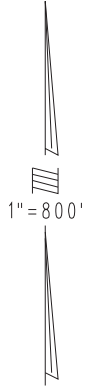


THIS MAP IS FOR THE PURPOSE OF AD VALOREM TAXATION ONLY.

Sec.27&28, T.3N.,R.5W., S.B.B.&M.

Hesperia Unified
Tax Rate Area
79050 79055 79068

0357-12



Parcel Map No. 16920, P.M. 213/94-95
 Ptn Parcel Map No. 15486, P.M. 201/99-100
 Parcel Map No. 10647, P.M. 123/87-88
 Parcel Map No. 8961, P.M. 109/76
 Parcel Map No. 9395, P.M. 103/28
 Ptn. Parcel Map No. 5219, P.M. 50/7-9
 Parcel Map No. 2714, P.M. 23/41
 Parcel Map No. 20081, P.M. 254/17-20
 Parcel Map No. 18663, P.M. 236/75-77
 Parcel Map No. 17420, P.M. 223/67-68

Assessor's Map
 Book 0357 Page 12
 San Bernardino County

REVISED
 08/02/23 KA
 03/20/24 CA
 04/17/24 XM
 06/28/24 CA