

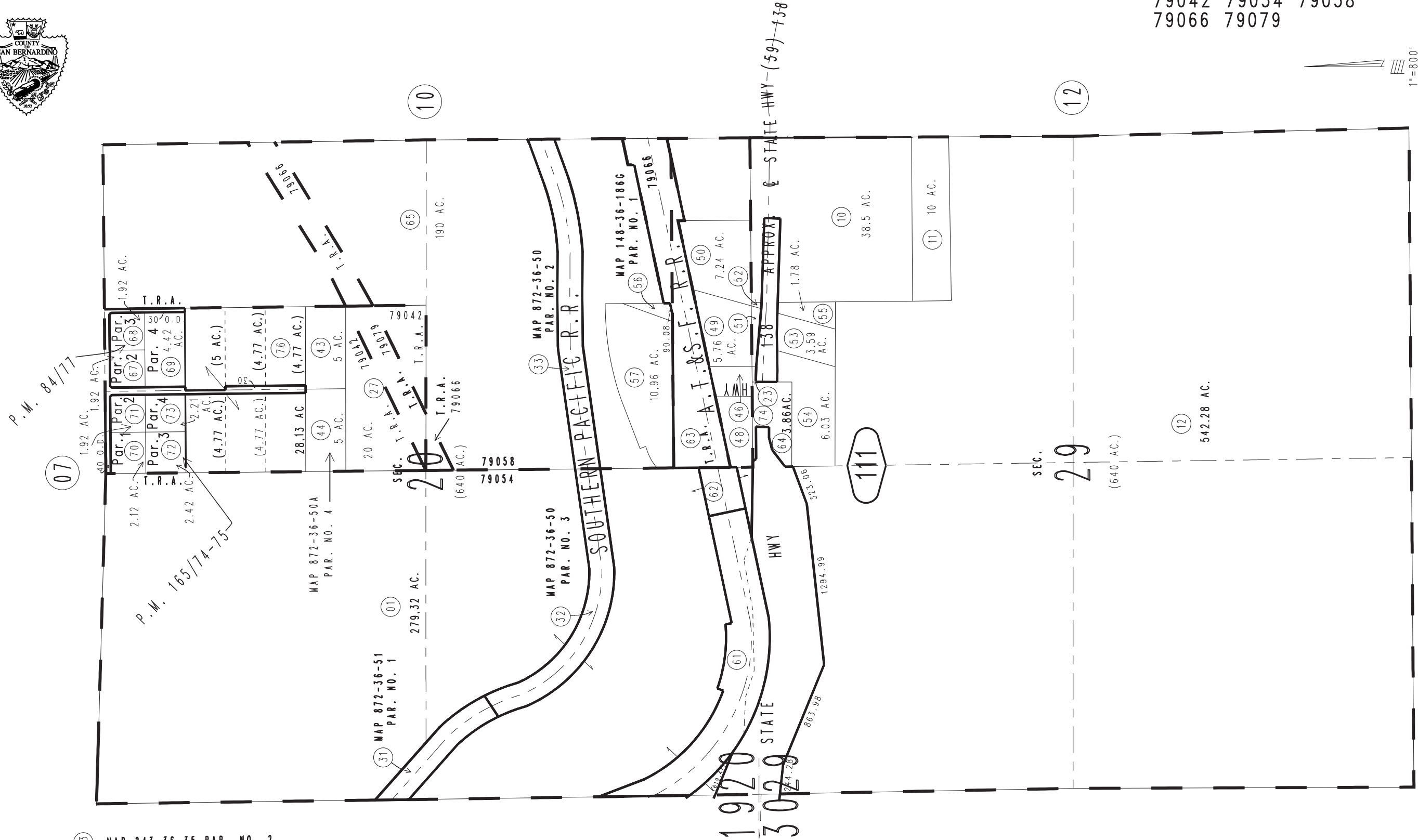
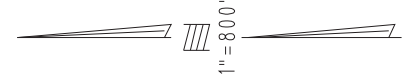
THIS MAP IS FOR THE PURPOSE OF AD VALOREM TAXATION ONLY.



Sec.20&29, T.3N.,R.5W., S.B.B.&M.

Hesperia Unified
Tax Rate Area
79042 79054 79058
79066 79079

0357-11



(23) MAP 243-36-35 PAR. NO. 2

(46) MAP 243-36-35 PAR. NO. 1

(49) MAP 148-36-186A PAR. NO. 2

(51) MAP 148-36-186A PAR. NO. 3

(53) MAP 148-36-186A PAR. NO. 4

(61) MAP 804-36-22C PAR. NO. 11

(62) MAP 804-36-23G PAR. NO. 14

(63) MAP 804-36-23G PAR. NO. 15

(74) MAP 804-36-23G PAR. NO. 17
M.R.O.

Parcel Map No. 12860, P.M. 165/74-75
Ptn. Parcel Map No. 8234, P.M. 84/77

April 2004

Assessor's Map
Book 0357 Page 11
San Bernardino County

REVISED
01/08/20 KA
04/24/23 KC

0351
18

0351
15