

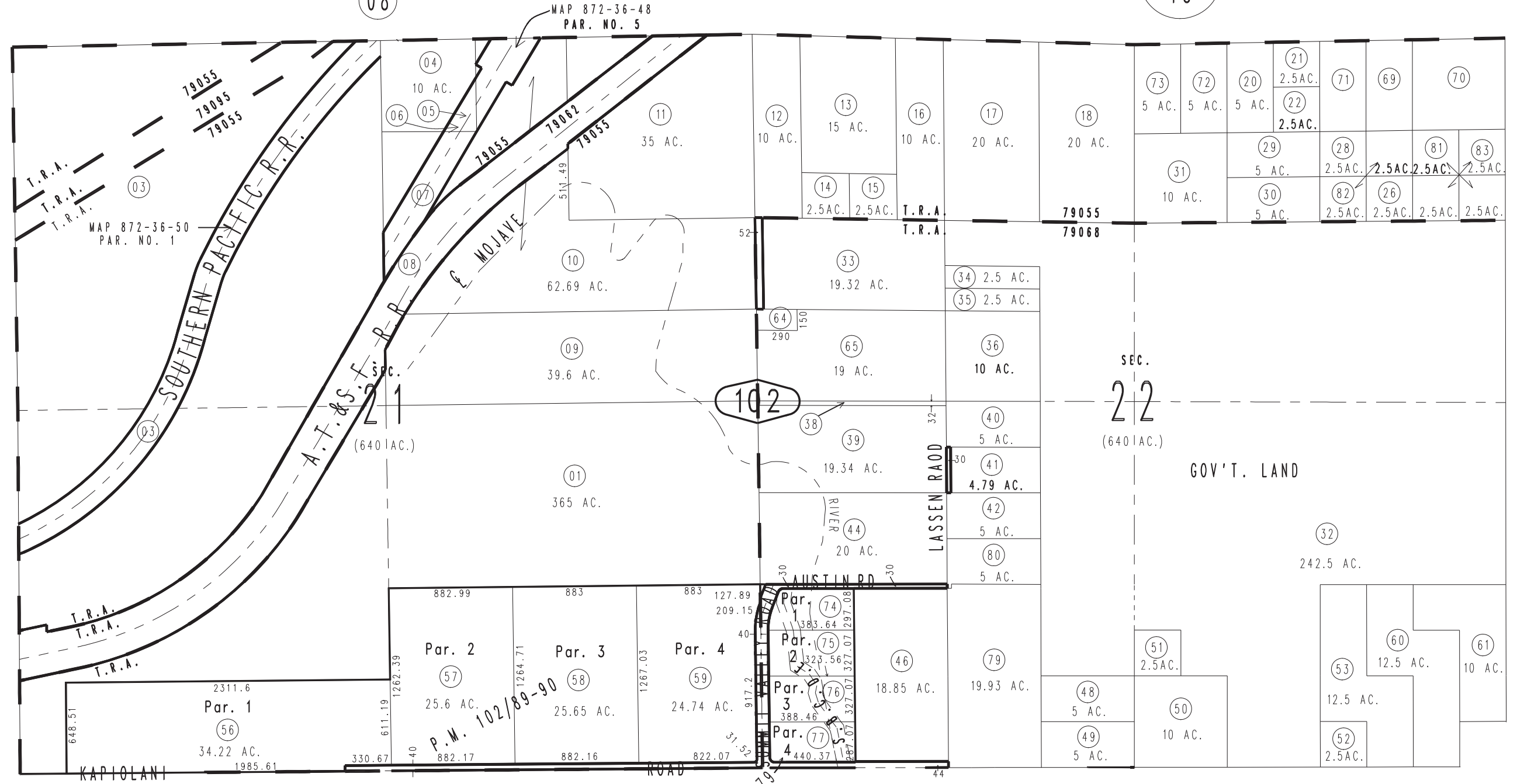
THIS MAP IS FOR THE PURPOSE OF AD VALOREM TAXATION ONLY.

# Sec.21&22, T.3N.,R.5W., S.B.B.&M.

Hesperia Unified Tax Rate Area 0357-10  
79055 79062 79068 79095



0405  
18



- 08 MAP 804-36-236  
PAR. NO. 16
- 05 MAP 872-36-48A  
PAR. NO. 11 (50 INT.)  
(EX. M.R.O.)

- 74- 4.01 AC.
- 75- 4.61 AC.
- 76- 4.6 AC.
- 77- 4.02 AC.

Parcel Map No. 15481, P.M. 194/77-79  
Parcel Map No. 9630, P.M. 102/89-90

Assessor's Map  
Book 0357 Page 10  
San Bernardino County

REVISED  
01/24/19 KC  
04/11/19 KA  
01/18/22 KA