

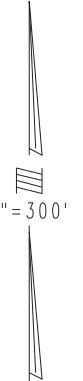
THIS MAP IS FOR THE PURPOSE OF AD VALOREM TAXATION ONLY.

N.W.1/4, Sec.35, T.4N.,R.5W., S.B.B.&M.

3046  
06

Hesperia Unified  
Tax Rate Area  
79051

0357-02

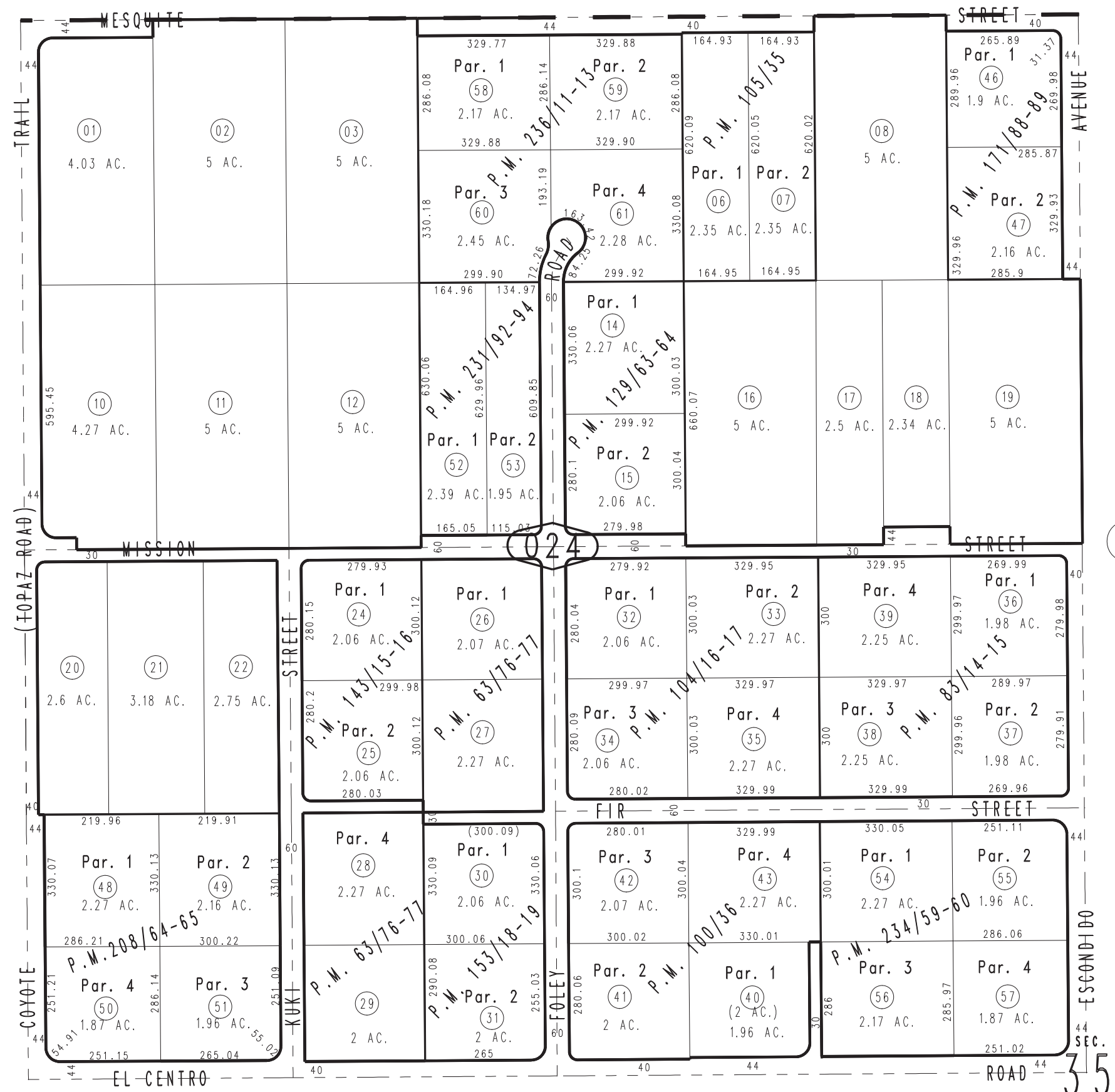


3039  
49

3039  
50

50

51



- Parcel Map No. 18343, P.M. 236/11-13
- Parcel Map No. 18344, P.M. 234/59-60
- Parcel Map No. 17209, P.M. 231/92-94
- Parcel Map No. 16386, P.M. 208/64-65
- Parcel Map No. 14208, P.M. 171/88-89
- Parcel Map No. 13082, P.M. 153/18-19
- Parcel Map No. 12097, P.M. 143/15-16
- Parcel Map No. 11056, P.M. 129/63-64
- Parcel Map No. 9739, P.M. 105/35
- Parcel Map No. 9650, P.M. 104/16-17
- Parcel Map No. 8198, P.M. 100/36
- Parcel Map No. 7901, P.M. 83/14-15
- Ptn. Parcel Map No. 6592, P.M. 63/76-77

Assessor's Map  
Book 0357 Page 02  
San Bernardino County

REVISED  
03/24/10 RU  
03/14/11 LH  
02/23/12 KA