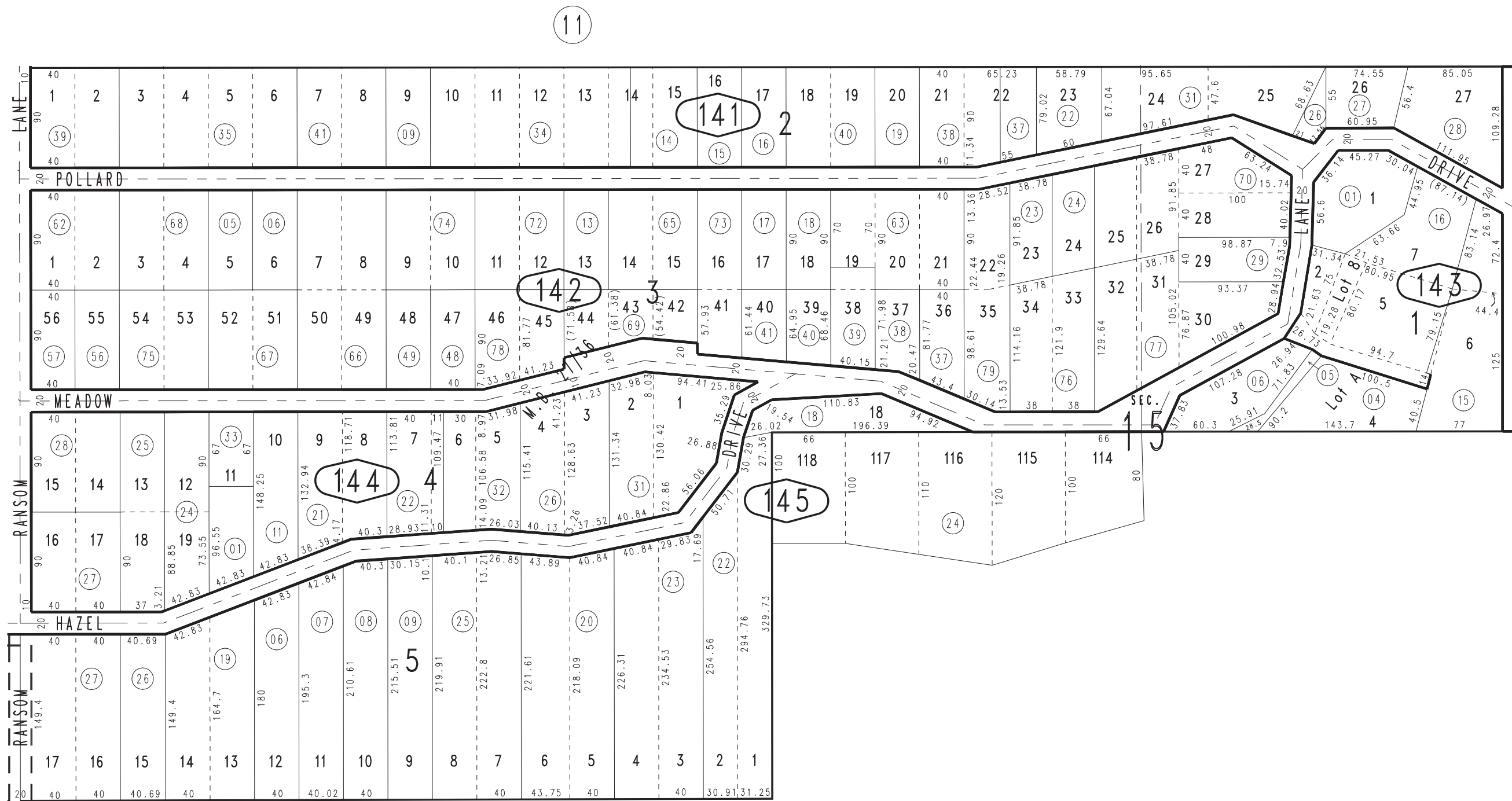


THIS MAP IS FOR THE PURPOSE OF AD VALOREM TAXATION ONLY.

Ptn. N.E.1/4, N.W.1/4, S.W.1/4, Sec.15, T.2N.,R.6W., S.B.B.&M.

Rialto Unified Tax Rate Area 106025

0350-14



12

13

15

December 2004

Ptn. Tract No. 1905, J.J. Jenkins Subdivision, M.B. 27/36
Ptn. Lytle Creek Tract Govt. Leases

Assessor's Map
Book 0350 Page 14
San Bernardino County

REVISED
02/11/19 KA
01/07/20 KA