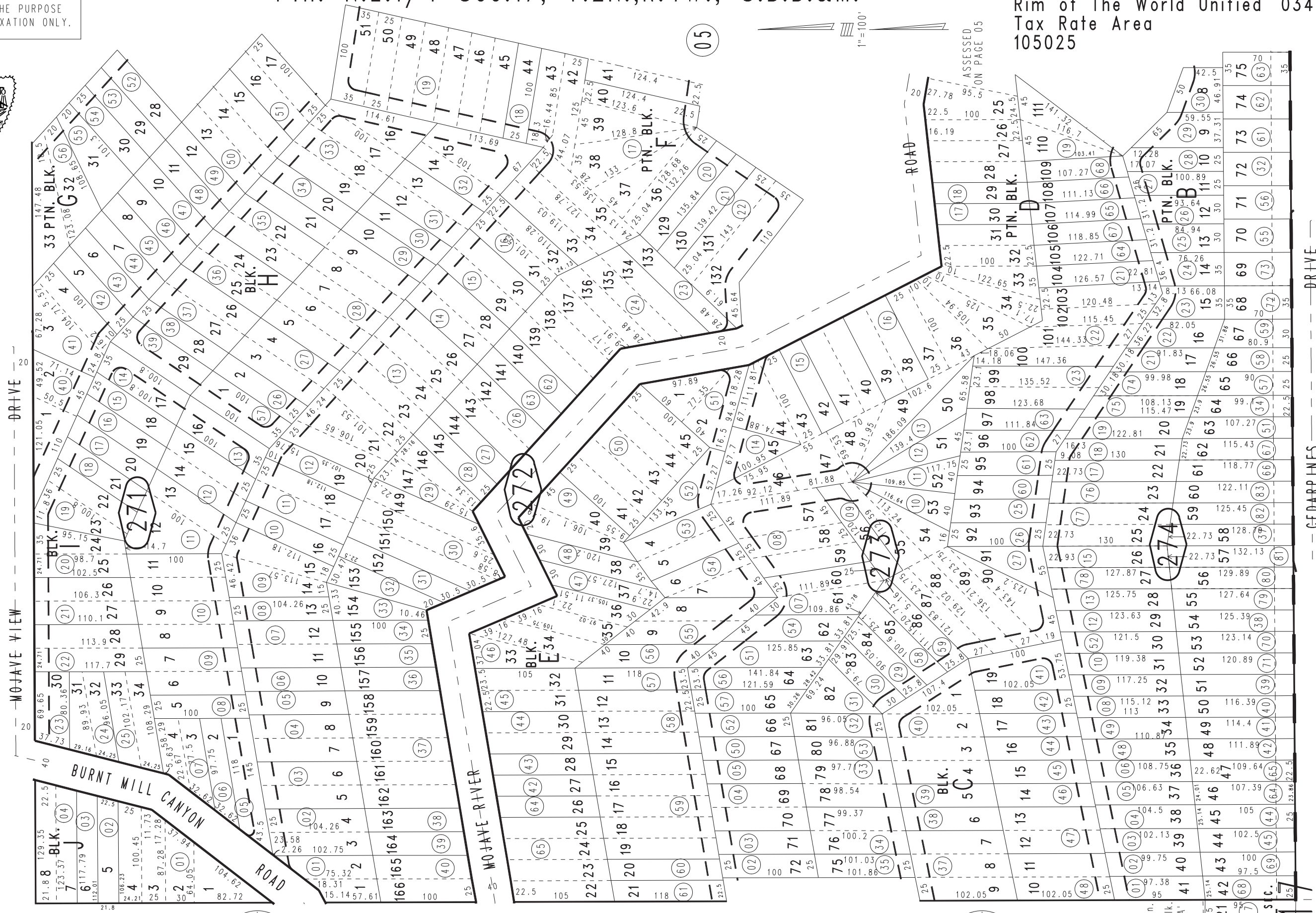


THIS MAP IS FOR THE PURPOSE OF AD VALOREM TAXATION ONLY.



Ptn. N.E.1/4 Sec.17, T.2N.,R.4W., S.B.B.&M.

Rim of The World Unified 0343-27  
Tax Rate Area 105025



May 2005

Ptn. Cedarpines Park No. 8, Tract No. 1895, M.B. 27/37  
Ptn. Cedarpines Highlands, Tract No. 1873, M.B. 27/40

Assessor's Map  
Book 0343 Page 27  
San Bernardino County

REVISED  
01/12/18 RU  
03/06/18 KA  
02/12/19 KC  
05/14/20 KA  
09/14/20 KA  
10/19/20 KA