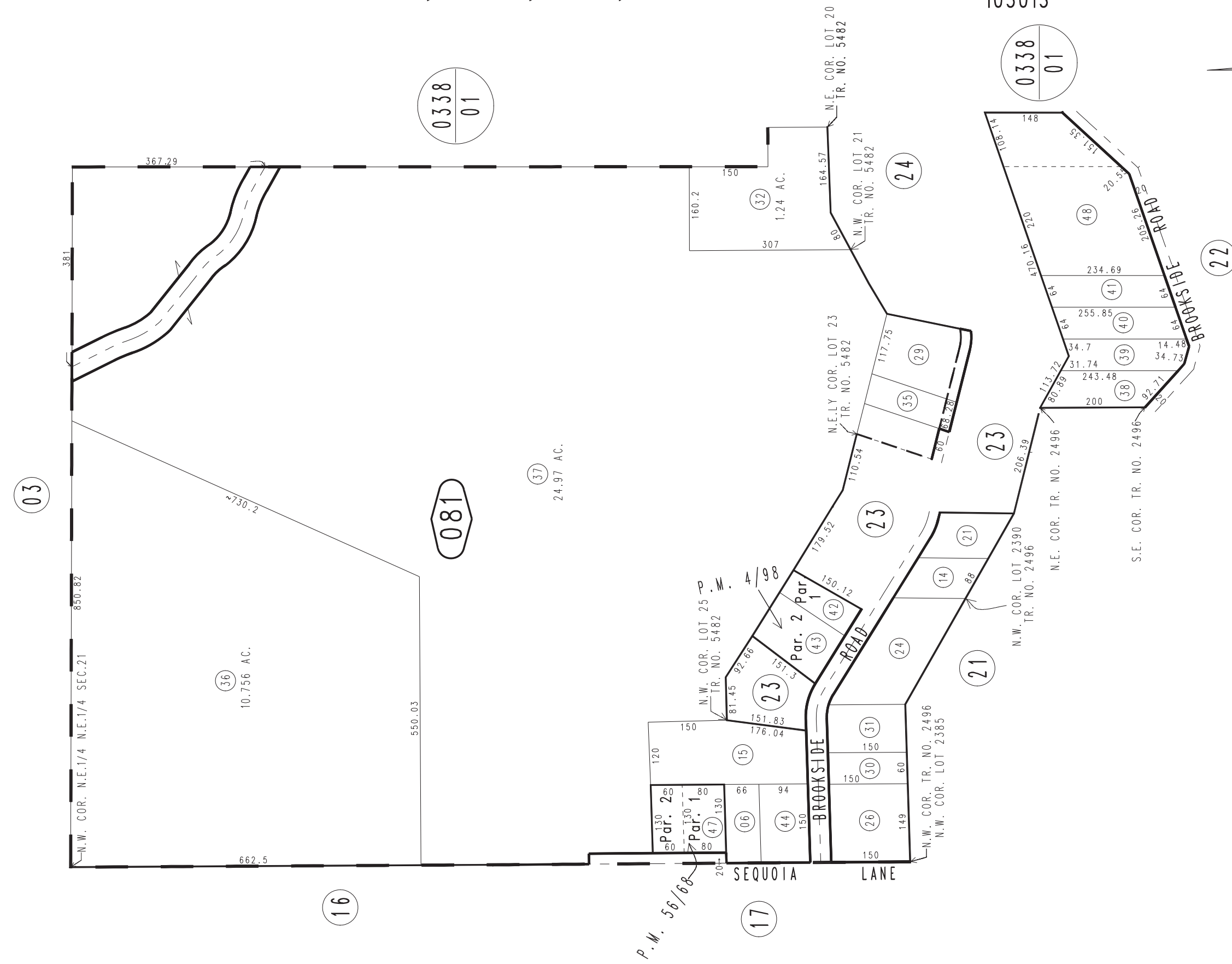
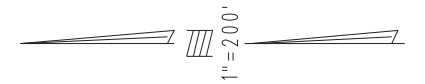


THIS MAP IS FOR THE PURPOSE  
OF AD VALOREM TAXATION ONLY.



Ptn. E.1/2, N.E.1/4, Sec.21, T.2N.,R.4W., S.B.B.&M.  
Ptn. Sec.22, T.2N.,R.4W., S.B.B.&M.

Rim of The World Unified 0343-08  
Tax Rate Area  
105013



May 2005

Parcel Map No. 2834, P.M. 56/68  
Parcel Map No. 423, P.M. 4/98

Assessor's Map  
Book 0343 Page 08  
San Bernardino County

REVISED  
09/14/12 KC-MC  
02/27/15 RU-MC