

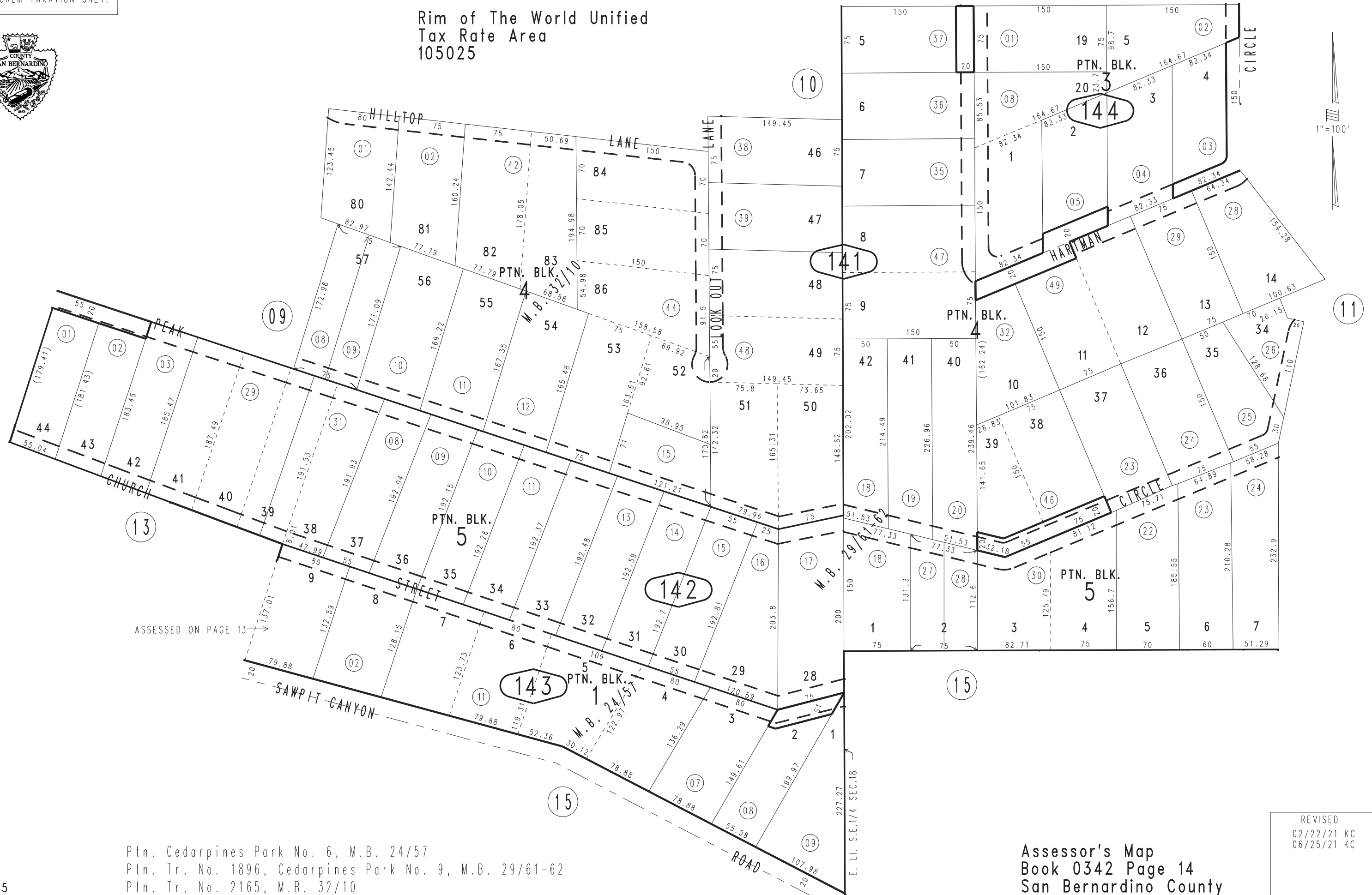
THIS MAP IS FOR THE PURPOSE OF AD VALOREM TAXATION ONLY.



Ptn. E.1/2 S.E.1/4 Sec.18, Ptn. W.1/2 S.W.1/4 Sec.17, T.2N.,R.4W., S.B.B.&M.

0342-14

Rim of The World Unified Tax Rate Area 105025



ASSESSED ON PAGE 13

Ptn. Cedarpines Park No. 6, M.B. 24/57
Ptn. Tr. No. 1896, Cedarpines Park No. 9, M.B. 29/61-62
Ptn. Tr. No. 2165, M.B. 32/10

May 2005

Assessor's Map
Book 0342 Page 14
San Bernardino County

REVISED
02/22/21 KC
06/25/21 KC