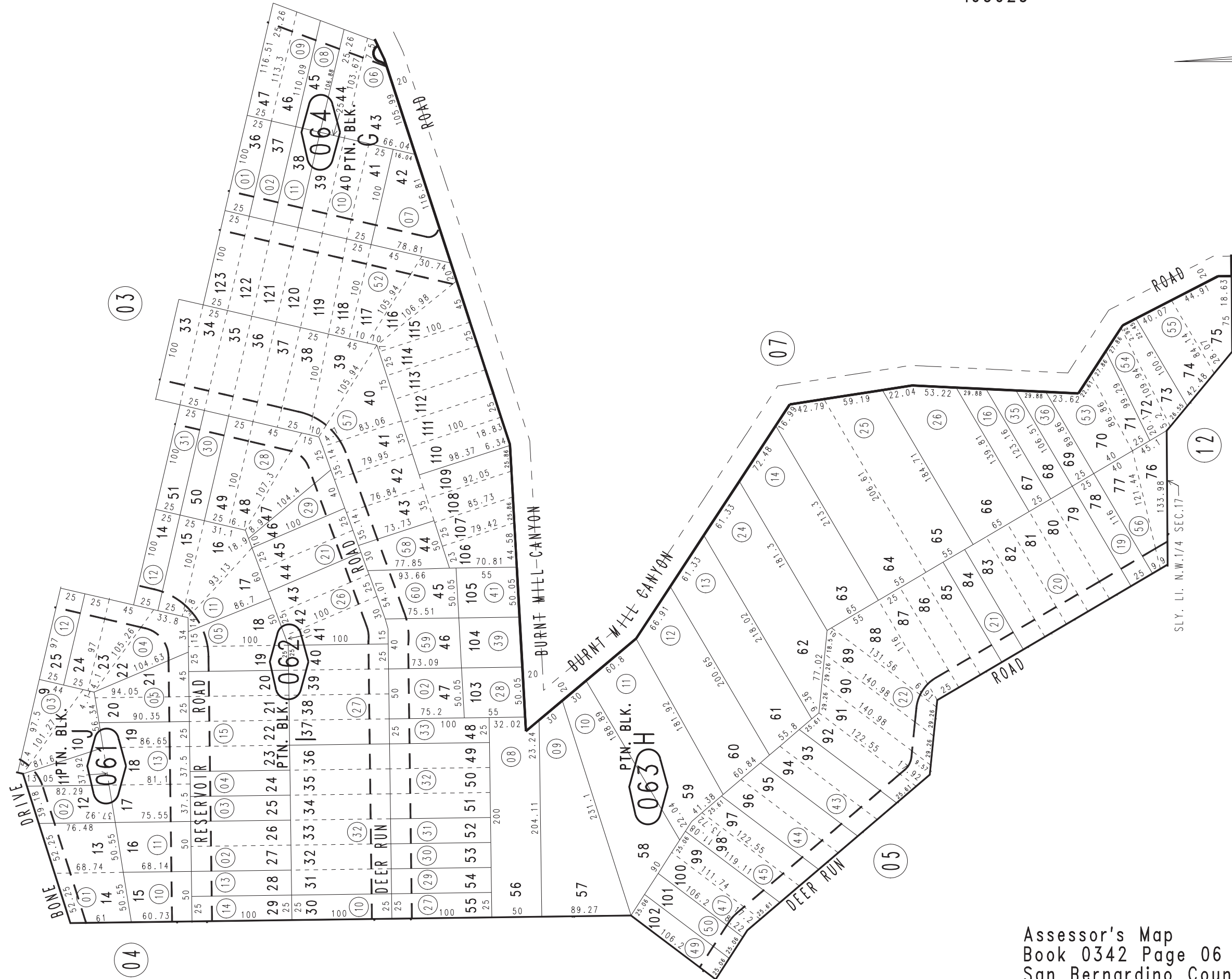


THIS MAP IS FOR THE PURPOSE
OF AD VALOREM TAXATION ONLY.



Ptn. W.1/2 Sec.17, T.2N.,R.4W., S.B.B.&M.
Ptn. Tr. No. 1895, Cedarpines Park No. 8, M.B. 27/37

Rim of The World Unified 0342-06
Tax Rate Area
105025



May 2005

Assessor's Map
Book 0342 Page 06
San Bernardino County

REVISED
04/07/21 KC
03/30/22 KA