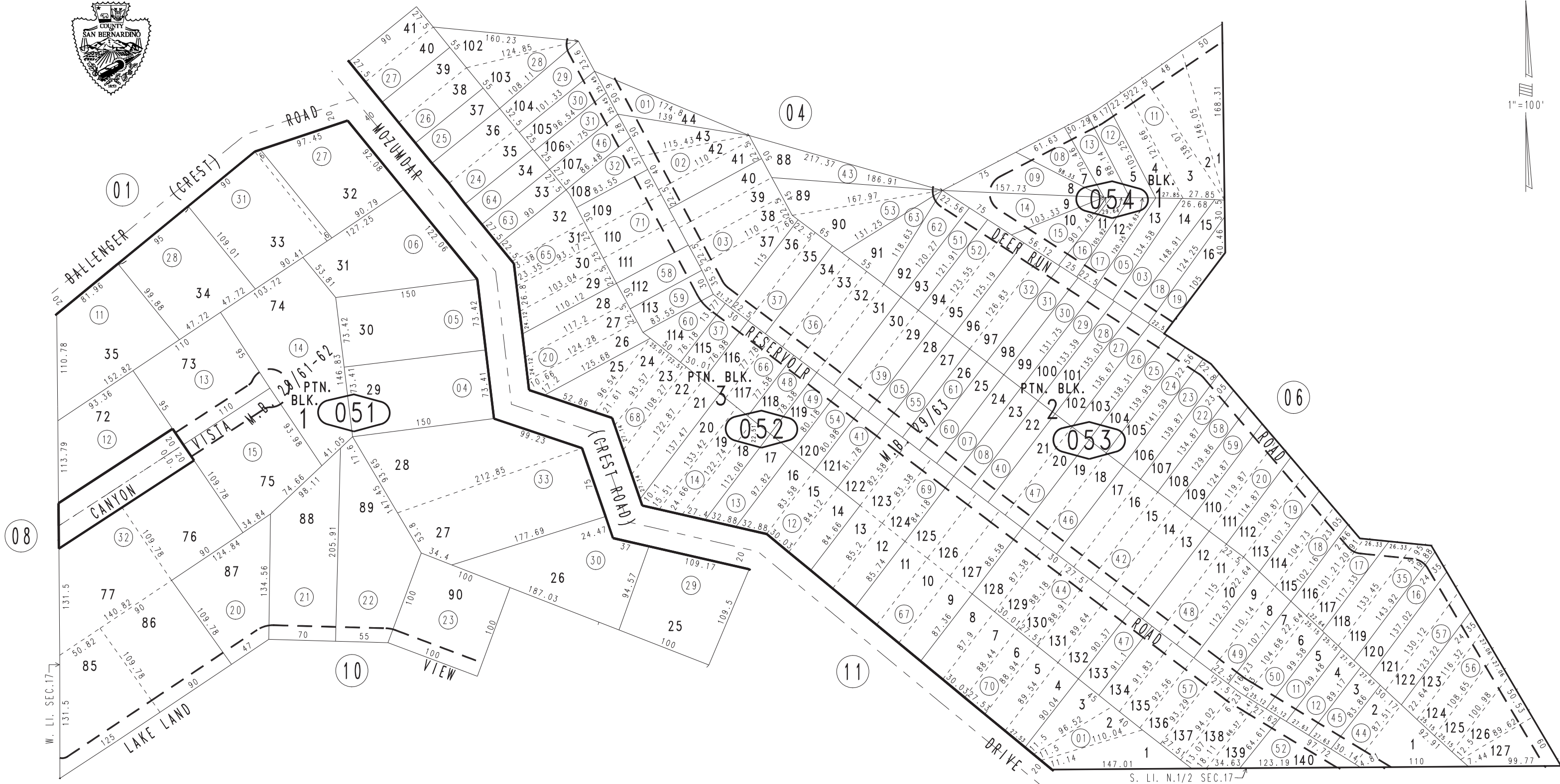


THIS MAP IS FOR THE PURPOSE OF AD VALOREM TAXATION ONLY.

Ptn. N.W.1/4 Sec.17, T.2N.,R.4W., S.B.B.&M.

Rim of The World Unified Tax Rate Area 105025

0342-05



May 2005

Ptn. Tr. No. 1896, Cedarpines Park No. 9, M.B. 29/61-62  
Ptn. Tr. No. 2004, Cedarpines Park No. 10, M.B. 29/63

Assessor's Map  
Book 0342 Page 05  
San Bernardino County

REVISED  
11/20/18 KC  
05/15/19 KA  
03/06/20 KC