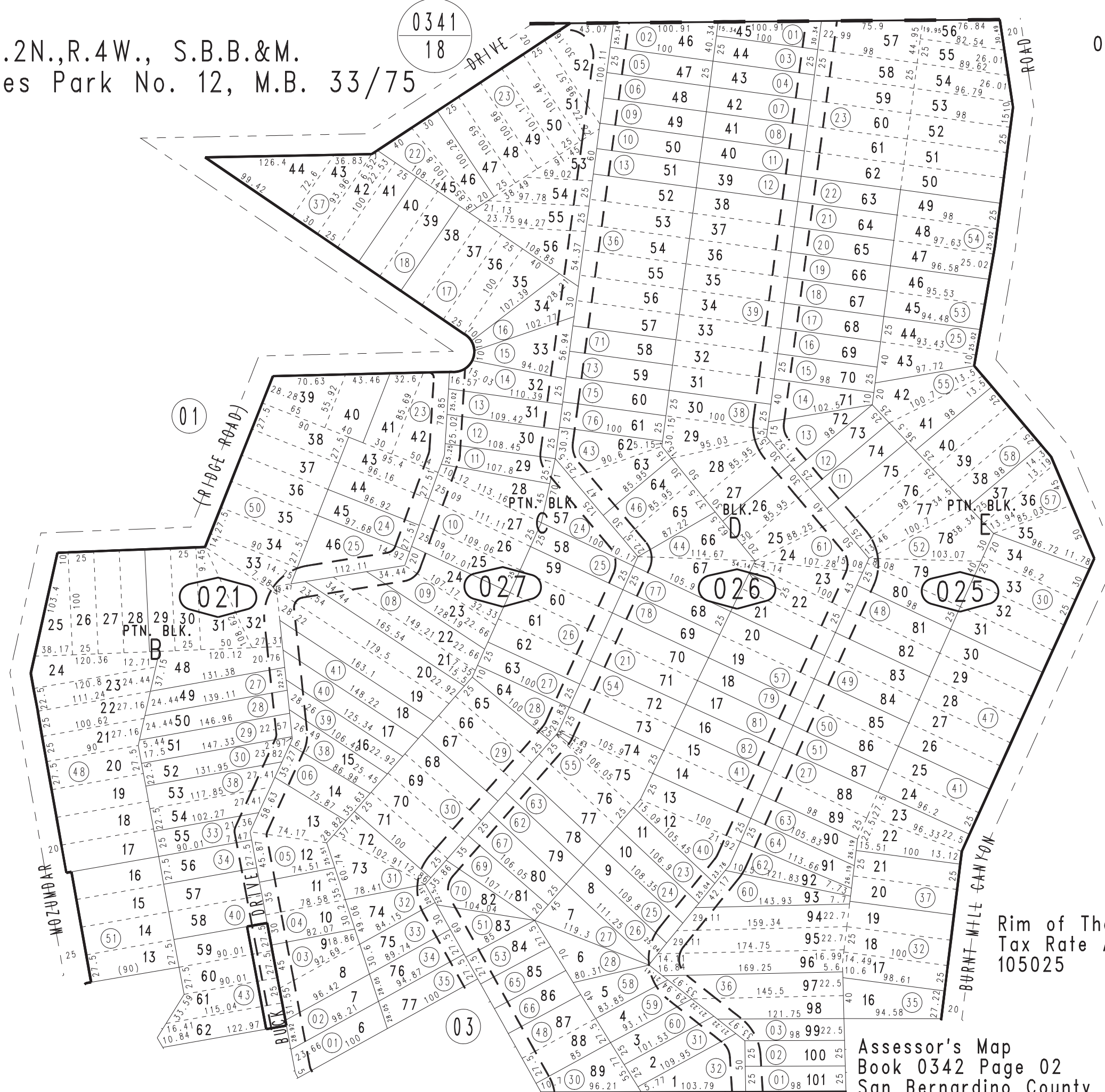


Ptn. N.1/2 Sec.17, T.2N.,R.4W., S.B.B.&M.
Ptn. Tr. No. 2330, Cedarpines Park No. 12, M.B. 33/75

0342-02

THIS MAP IS FOR THE PURPOSE
OF AD VALOREM TAXATION ONLY.



0343
01

Rim of The World Unified
Tax Rate Area
105025

Assessor's Map
Book 0342 Page 02
San Bernardino County

REVISED
07/21/22 KA