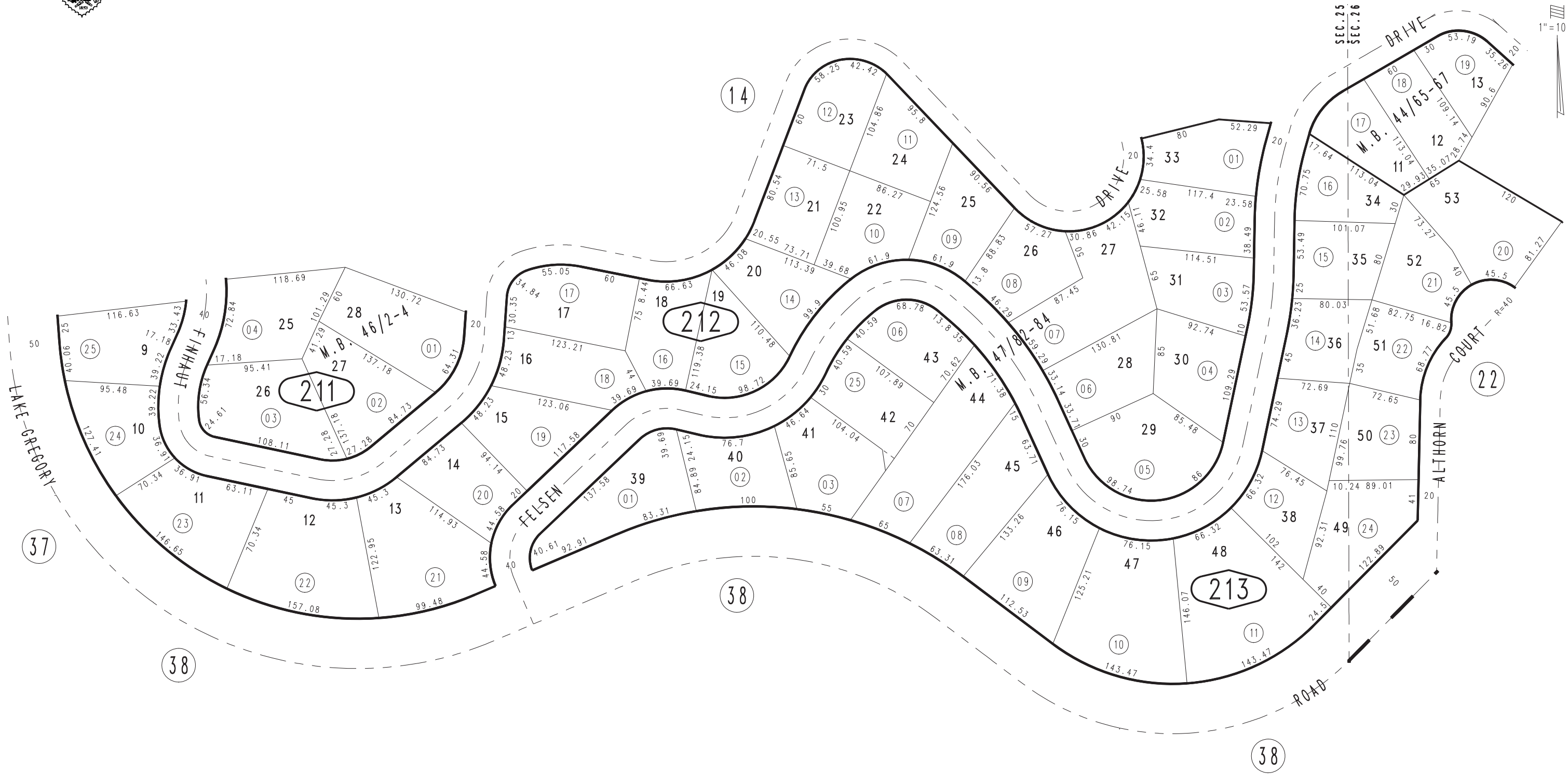


THIS MAP IS FOR THE PURPOSE OF AD VALOREM TAXATION ONLY.

Ptn. N.E.1/4 Sec.26, Ptn. N.W.1/4 Sec.25, T.2N.,R.4W., S.B.B.&M. Rim of The World Unified 0340-21 Tax Rate Area 105011



May 2005

Ptn. Tr. No. 3222, Switzerland Sub. No. 14, M.B. 44/65-67  
Ptn. Tr. No. 3456, Switzerland Sub. No. 15, M.B. 46/2-4  
Ptn. Tr. No. 3570, Switzerland Sub. No. 16, M.B. 47/82-84

Assessor's Map  
Book 0340 Page 21  
San Bernardino County

REVISED  
10/16/12 KA-MC