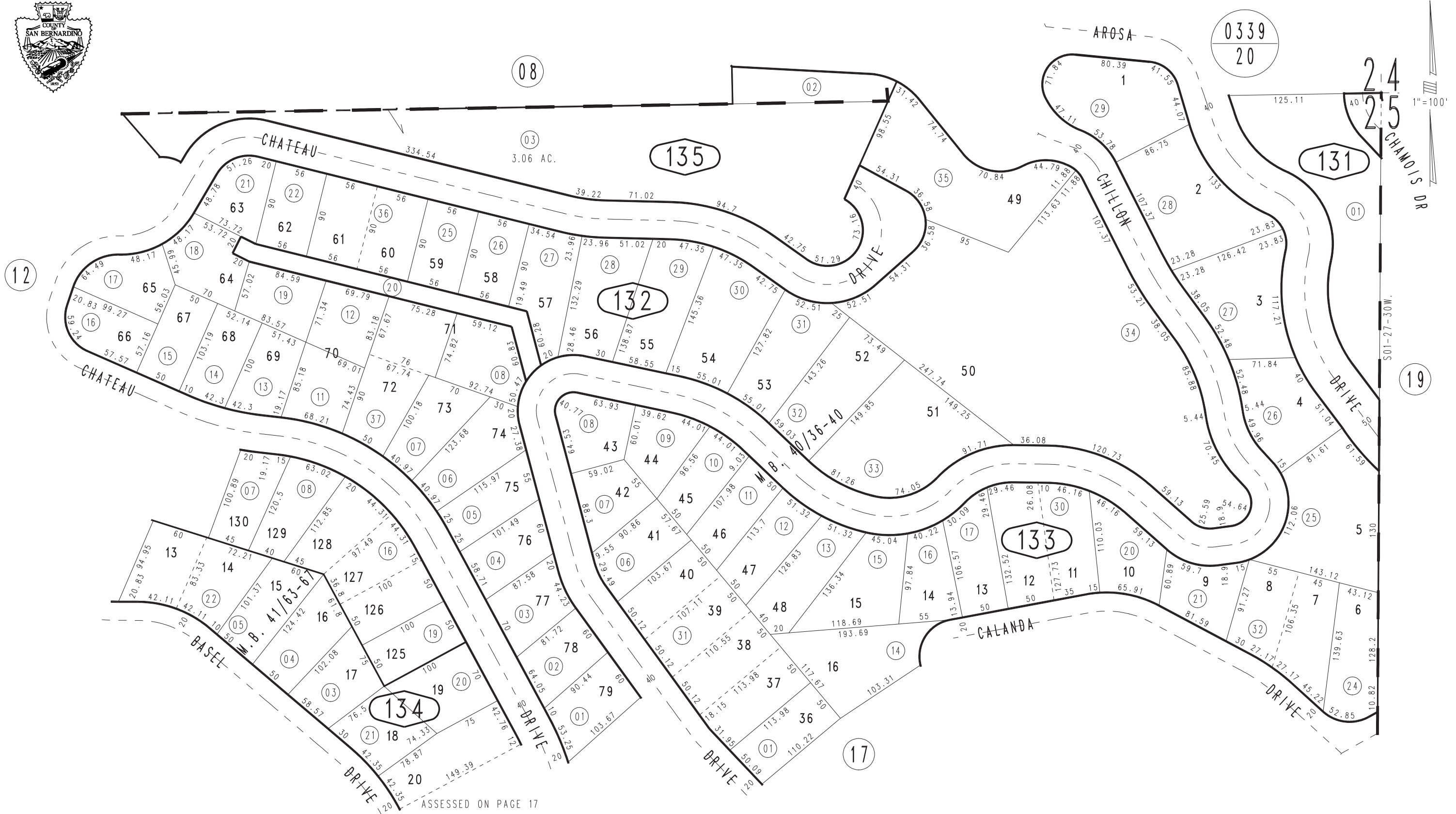


THIS MAP IS FOR THE PURPOSE OF AD VALOREM TAXATION ONLY.

Ptn. N.W.1/4 Sec.25, Ptn. S.W.1/4 Sec.24, T.2N.,R.4W., S.B.B.&M. Rim of The World Unified 0340-13 Tax Rate Area 105011



ASSESSED ON PAGE 17

May 2005

Ptn. Tr. No. 2871, Switzerland Sub. No. 9, M.B. 40/36-40  
Ptn. Tr. No. 3016, Switzerland Sub. No. 10, M.B. 41/63-67

Assessor's Map  
Book 0340 Page 13  
San Bernardino County

REVISED  
01/09/25 CA