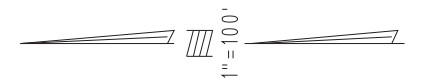
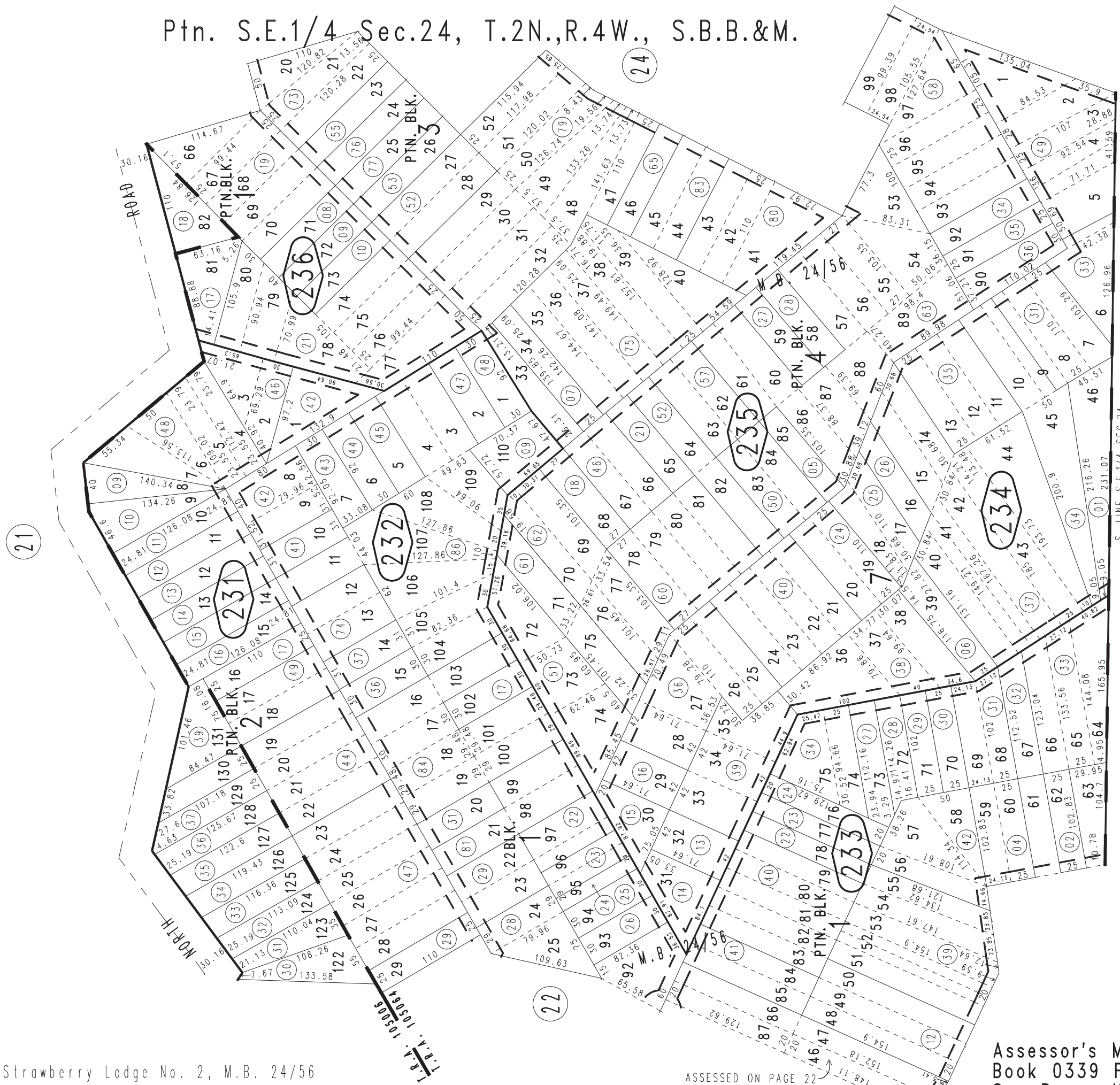


THIS MAP IS FOR THE PURPOSE OF AD VALOREM TAXATION ONLY.



Ptn. S.E.1/4 Sec.24, T.2N.,R.4W., S.B.B.&M.

0339-23



Rim of The World Unified Tax Rate Area 105006 105064

0340 / 20

0340 / 19

May 2005

Ptn. Strawberry Lodge No. 2, M.B. 24/56
Ptn. Strawberry Lodge, M.B. 24/49

ASSESSED ON PAGE 22

Assessor's Map
Book 0339 Page 23
San Bernardino County

REVISED
02/02/21 KA
11/24/21 KC
08/07/23 KA
09/28/23 XM