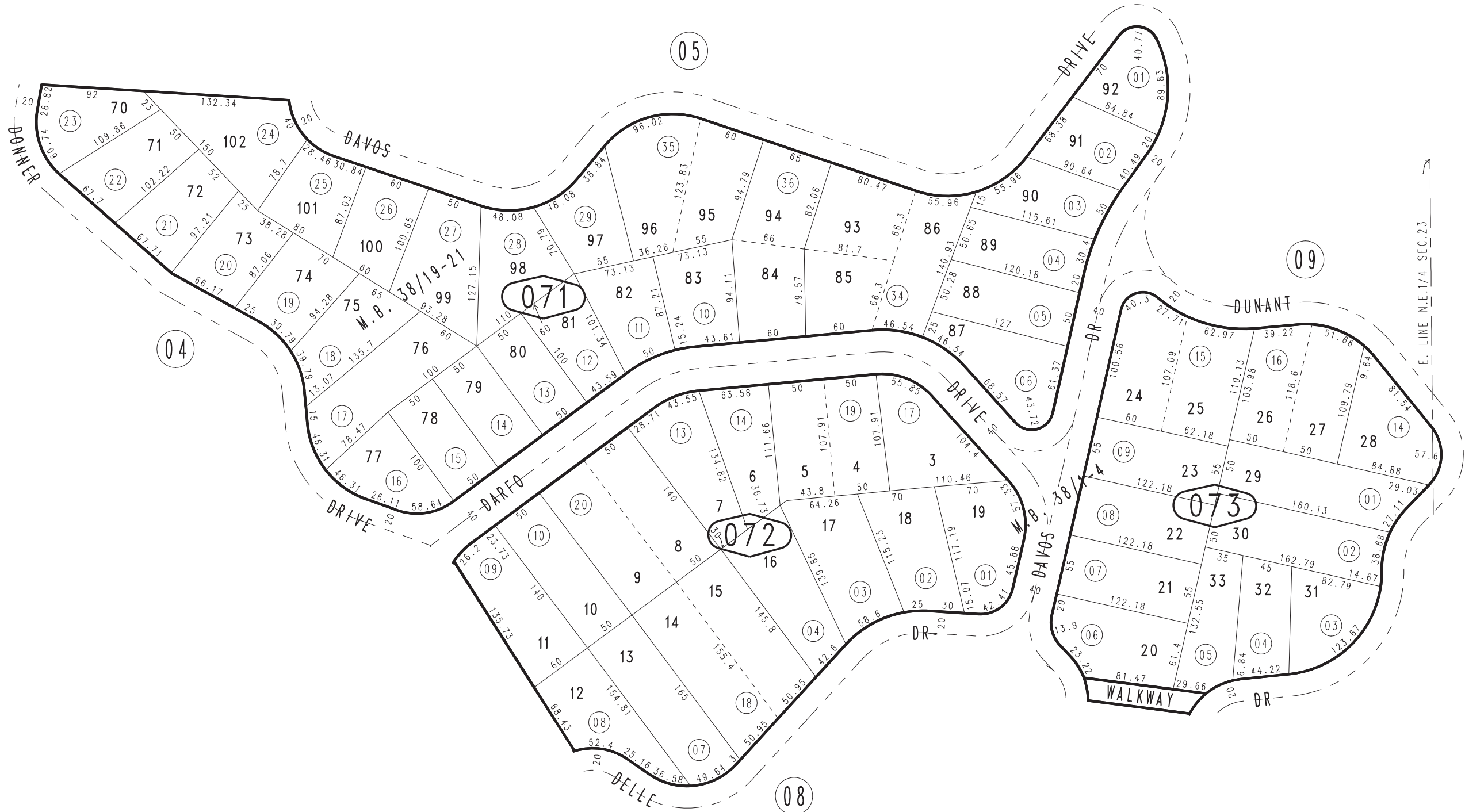


THIS MAP IS FOR THE PURPOSE  
OF AD VALOREM TAXATION ONLY.

Ptn. N.E.1/4 Sec.23, T.2N.,R.4W., S.B.B.&M.

Rim of The World Unified  
Tax Rate Area  
105011

0339-07



May 2005

Ptn. Switzerland Sub., Unit No. 7, Tr. No. 2727, M.B. 38/19-21  
Ptn. Switzerland Sub., Unit No. 5, Tr. No. 2683, M.B. 38/1-4

Assessor's Map  
Book 0339 Page 07  
San Bernardino County

REVISED  
05/26/20 KA