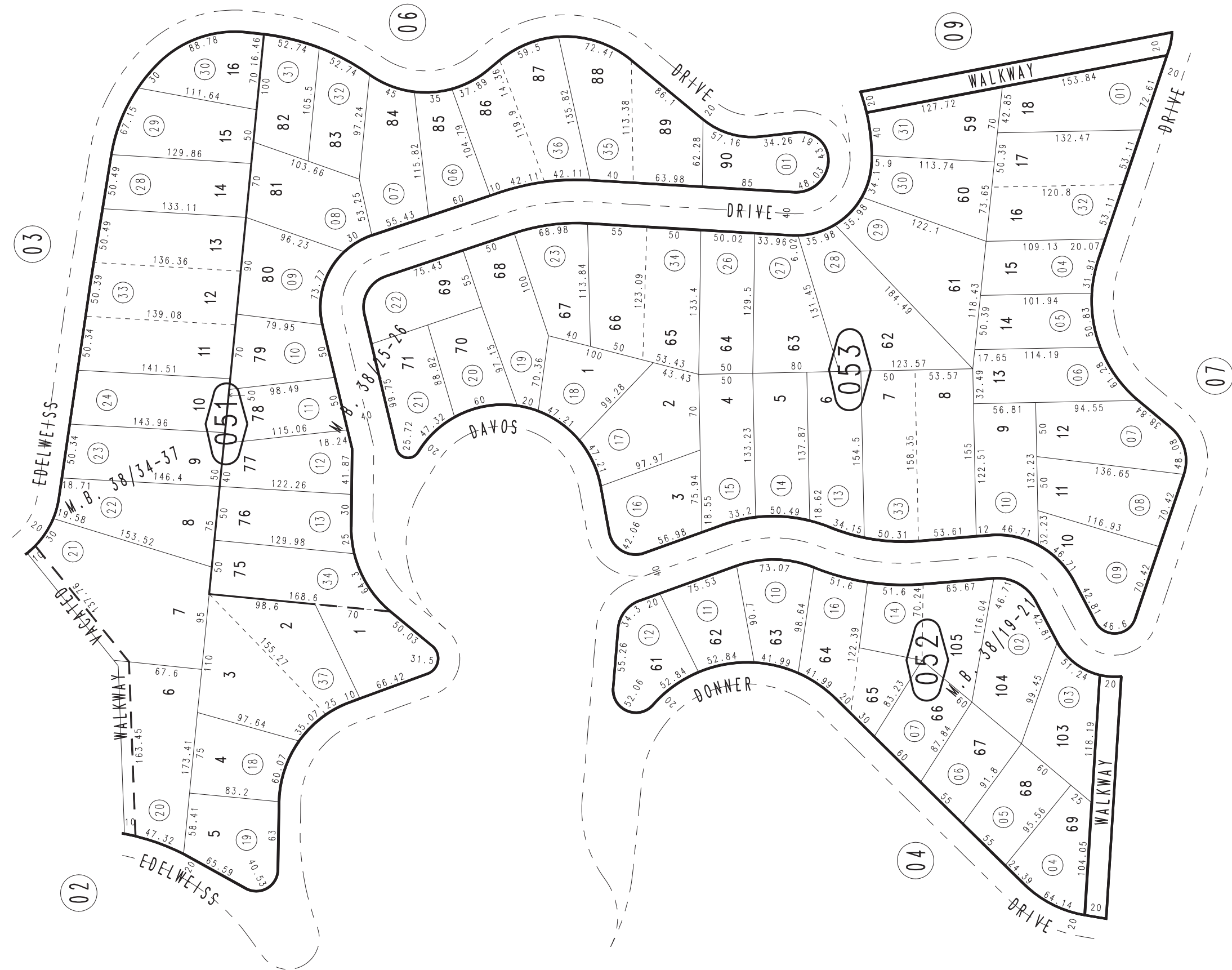
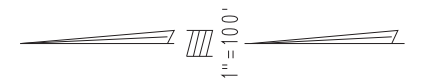


THIS MAP IS FOR THE PURPOSE
OF AD VALOREM TAXATION ONLY.

Ptn. N.E.1/4 Sec.23, T.2N.,R.4W., S.B.B.&M.

Rim of The World Unified
Tax Rate Area
105011 0339-05



Ptn. Switzerland Sub., Unit No. 8, Tr. No. 2736, M.B. 38/34-37
Ptn. Switzerland Sub., Unit No. 6, Tr. No. 2723, M.B. 38/25-26
Ptn. Switzerland Sub., Unit No. 7, Tr. No. 2727, M.B. 38/19-21

May 2005

Assessor's Map
Book 0339 Page 05
San Bernardino County

REVISED
01/23/19 KA
01/24/19 KA