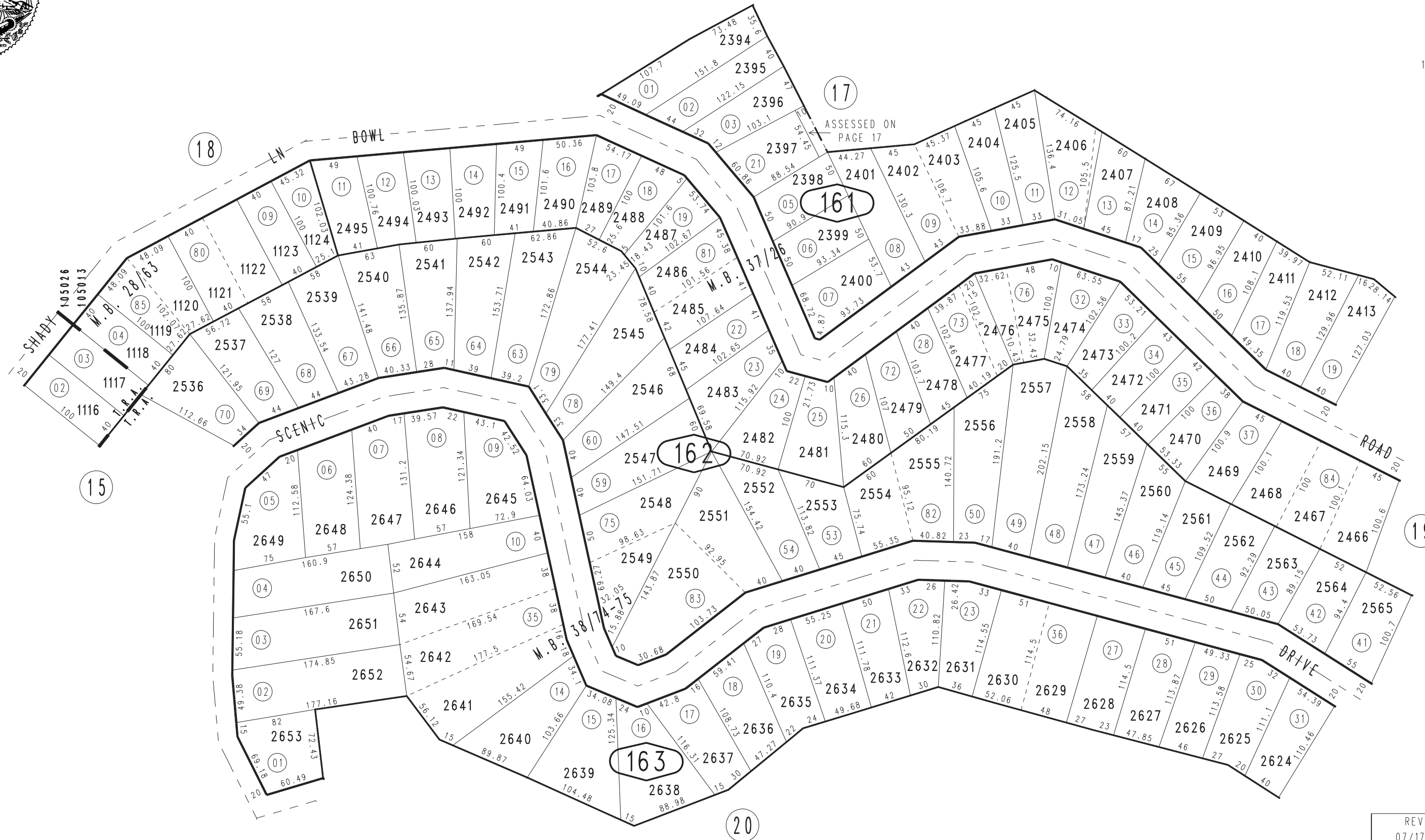


THIS MAP IS FOR THE PURPOSE
OF AD VALOREM TAXATION ONLY.

Ptn. S.1/2 Sec.22, T.2N.,R.4W., S.B.B.&M.

Rim of The World Unified 0338-16
Tax Rate Area
105013,105026



Ptn. Crestline Village, Sub. No. 22, Tract No. 2745, M.B. 38/74-75
Ptn. Crestline Village, Sub. No. 21, Tract No. 2604, M.B. 37/26
Ptn. Crestline Village, Sub. No. 10, Tract No. 1988, M.B. 28/63

Assessor's Map
Book 0338 Page 16
San Bernardino County

May 2005

REVISED
07/17/19 KA