

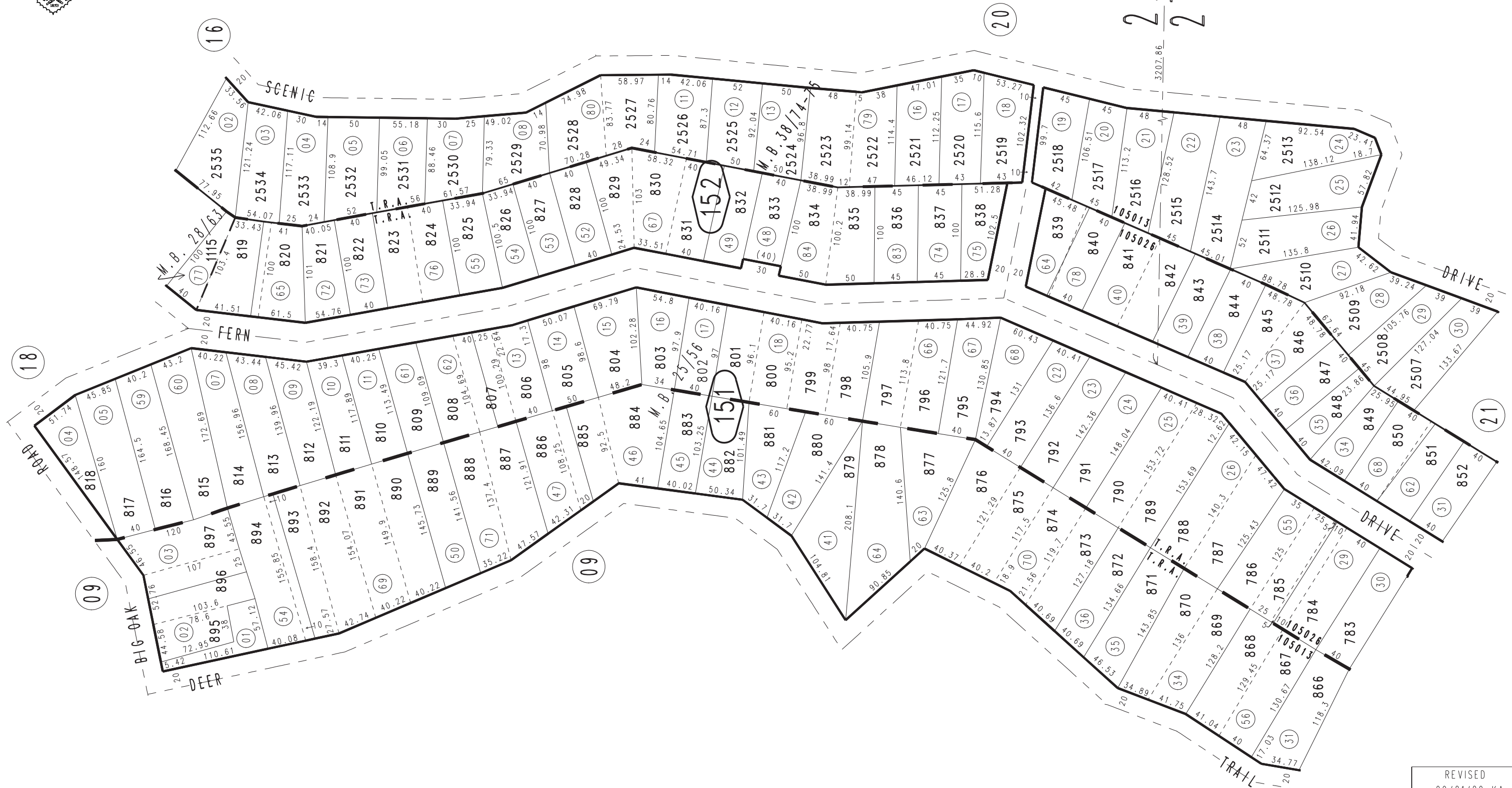
THIS MAP IS FOR THE PURPOSE  
OF AD VALOREM TAXATION ONLY.

Ptn. W.1/2 Sec.22&27, T.2N.,R.4W., S.B.B.&M.

Rim of The World Unified 0338-15  
Tax Rate Area  
105013,105026



2223  
2726



Ptn. Crestline Village, Sub. No. 22, Tract No. 2745, M.B. 38/74-75  
Ptn. Crestline Village, Sub. No. 10, Tract No. 1988, M.B. 28/63  
Ptn. Crestline Village, Sub. No. 7, Tract No. 1770, M.B. 25/56

Assessor's Map  
Book 0338 Page 15  
San Bernardino County

REVISED  
09/21/20 KA  
02/23/21 KC