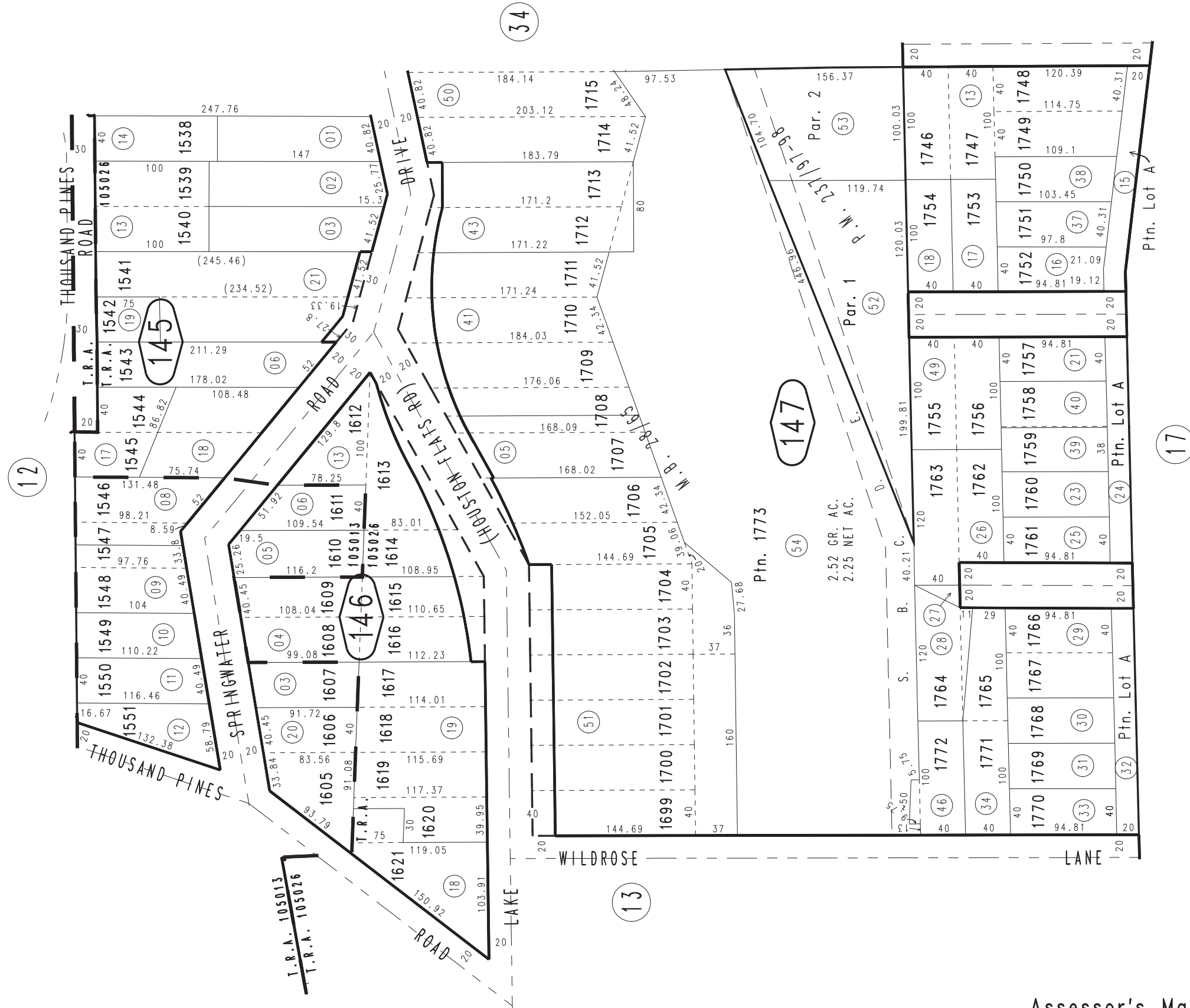


THIS MAP IS FOR THE PURPOSE OF AD VALOREM TAXATION ONLY.



Ptn. S.E.1/4 Sec.22, T.2N.,R.4W., S.B.B.&M.

Rim of The World Unified Tax Rate Area 0338-14
105013,105026



May 2005

Parcel Map No. 16395, P.M. 237/97-98
Ptn. Crestline Village, Sub. No. 12, Tract No. 1990, M.B. 28/65

Assessor's Map
Book 0338 Page 14
San Bernardino County

REVISED
03/07/17 KC