

THIS MAP IS FOR THE PURPOSE OF AD VALOREM TAXATION ONLY.



Ptn. S.W.1/4 Sec.22, T.2N.,R.4W., S.B.B.&M.

Rim of The World Unified Tax Rate Area 105013,105015,105026

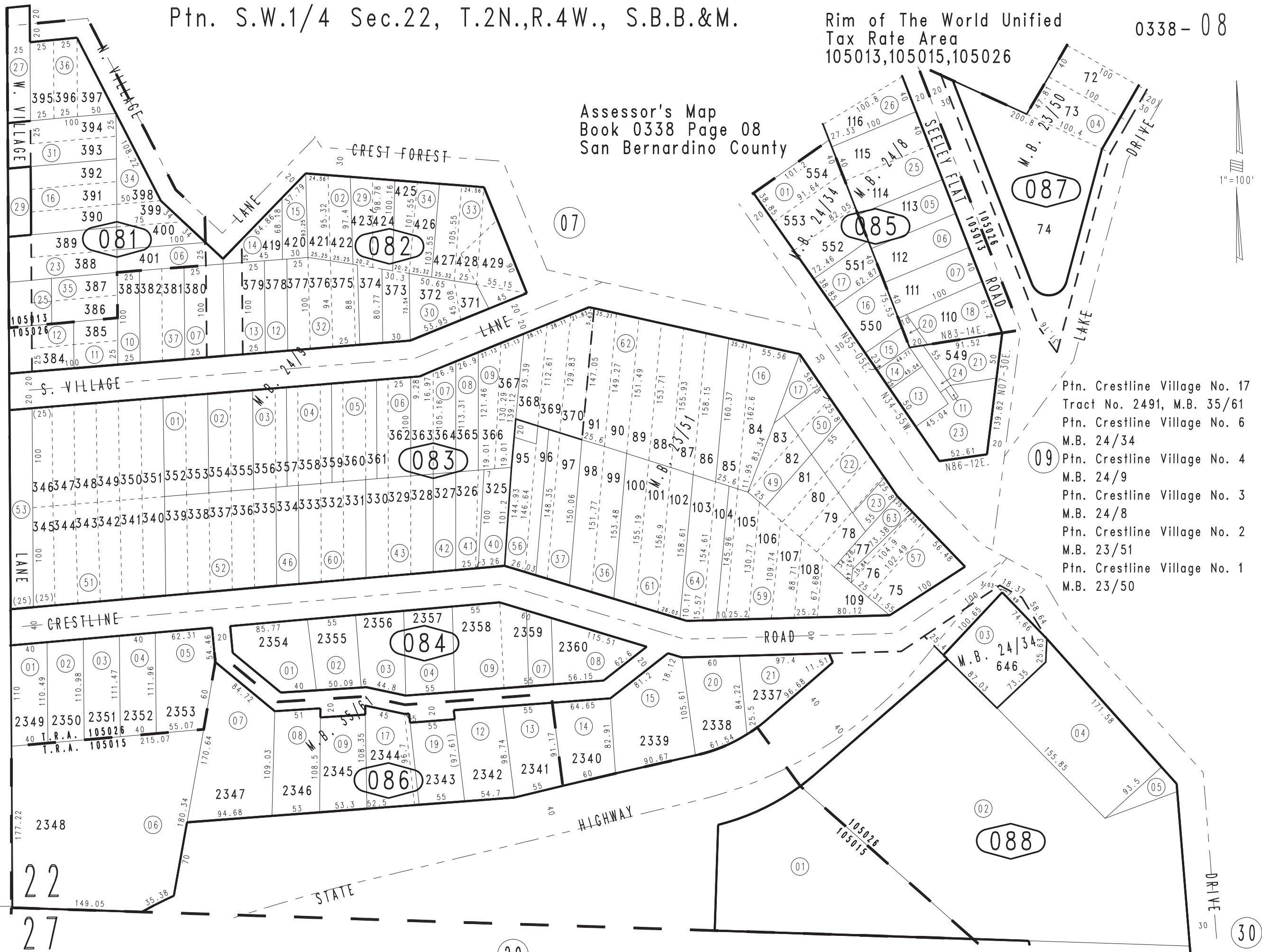
0338-08

Assessor's Map Book 0338 Page 08 San Bernardino County



0344 18

- Ptn. Crestline Village No. 17 Tract No. 2491, M.B. 35/61
- Ptn. Crestline Village No. 6 M.B. 24/34
- Ptn. Crestline Village No. 4 M.B. 24/9
- Ptn. Crestline Village No. 3 M.B. 24/8
- Ptn. Crestline Village No. 2 M.B. 23/51
- Ptn. Crestline Village No. 1 M.B. 23/50



REVISED 10/24/14 KC 01/13/16 KC

21 22 28 27