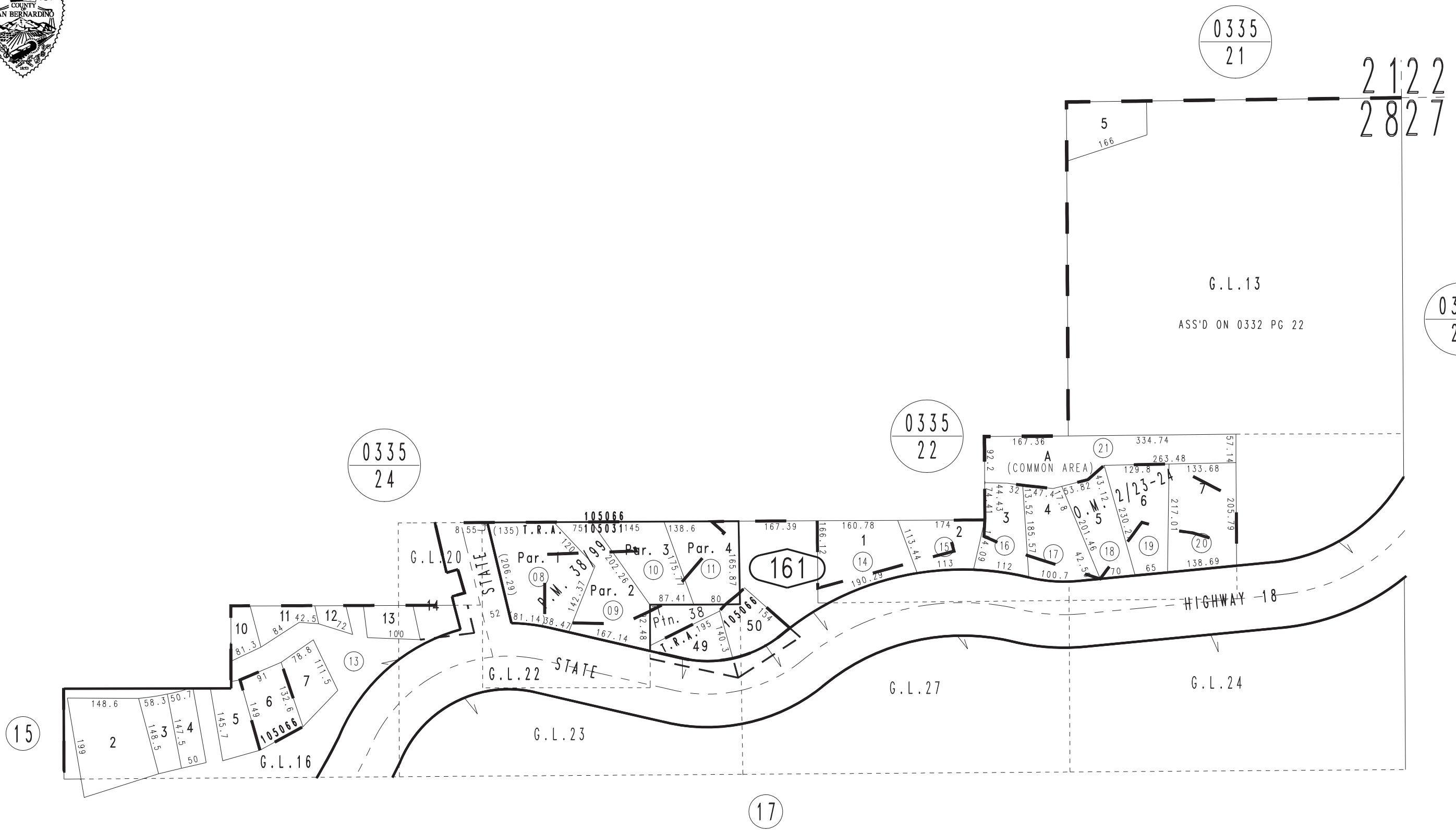


THIS MAP IS FOR THE PURPOSE
OF AD VALOREM TAXATION ONLY.

Ptn. N.E.1/4 Sec.28, T.2N.,R.3W., S.B.B.&M.

Rim of The World Unified 0336-16
Tax Rate Area
105031 105066



Parcel Map No. 4161, P.M. 38/99
Ptn. Crest Road Tract, Gov't. Leases
Ptn. Arrowhead Tract, Gov't. Leases
Official Map No. 1005, M.B. 2/23-24

April 2005

Assessor's Map
Book 0336 Page 16
San Bernardino County

REVISED
03/02/09 GL