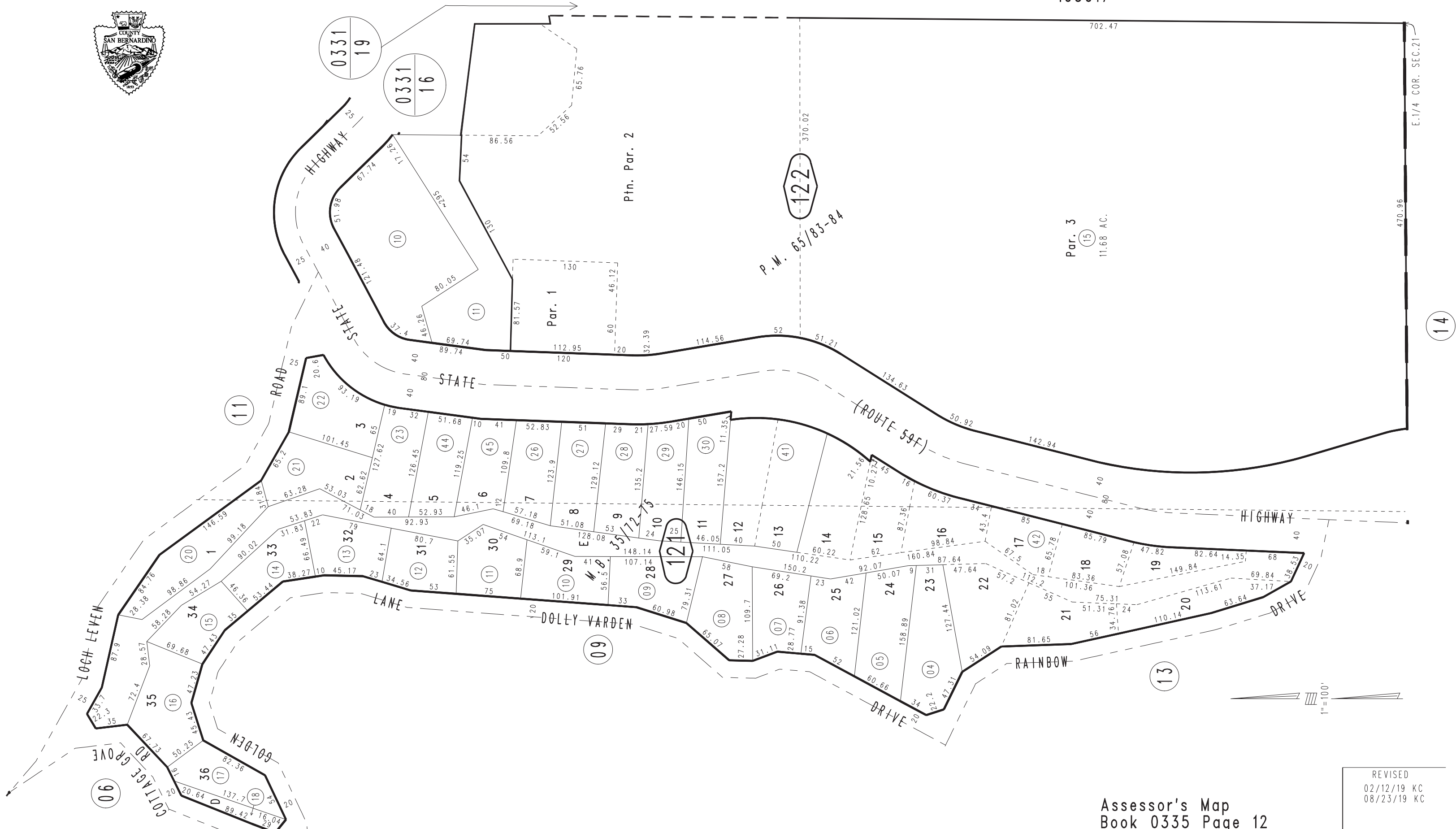


THIS MAP IS FOR THE PURPOSE OF AD VALOREM TAXATION ONLY.



Ptn. N.E.1/4 Sec.21, T.2N.,R.3W., S.B.B.&M.
Ptn. Tr. No. 2500, Arrowhead Woods No. 62, M.B. 35/72-75

Rim of The World Unified 0335-12
Tax Rate Area
105017



April 2005

Parcel Map 5087, P.M. 65/83-84

Assessor's Map
Book 0335 Page 12
San Bernardino County

REVISED
02/12/19 KC
08/23/19 KC

1"=100'