

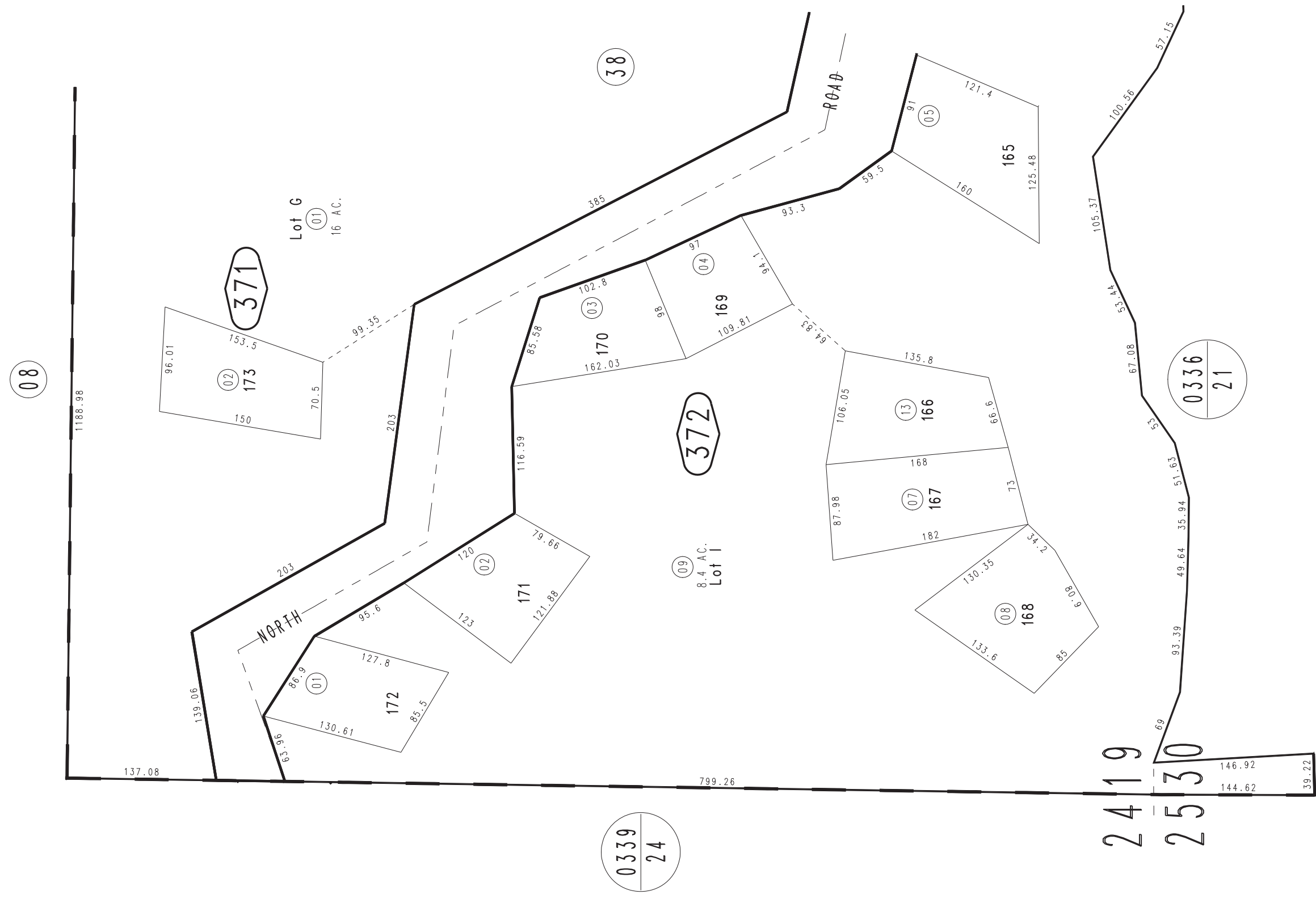
THIS MAP IS FOR THE PURPOSE
OF AD VALOREM TAXATION ONLY.



Ptn. Tract No. 7909, M.B. 104/22-27

Rim of The World Unified
Tax Rate Area
105053

0334-37



April 2005

Ptn. S.E.1/4, Sec. 19
T.2N., R.3W.

Assessor's Map
Book 0334 Page 37
San Bernardino County

REVISED