

THIS MAP IS FOR THE PURPOSE OF AD VALOREM TAXATION ONLY.



Ptn. S.E.1/4 Sec.19, T.2N.,R.3W., S.B.B.&M.

Rim of The World Unified Tax Rate Area 105035

0334-16

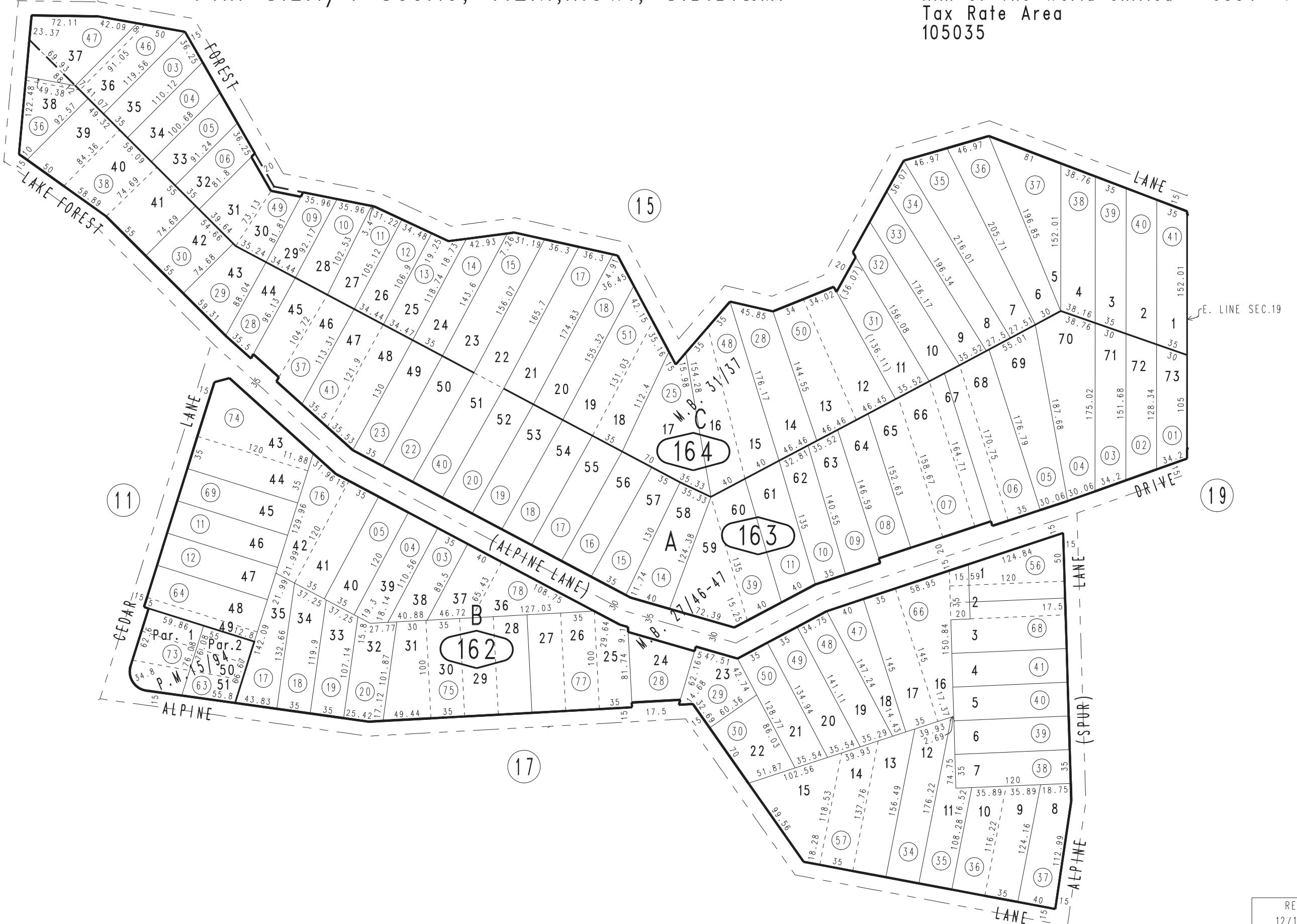
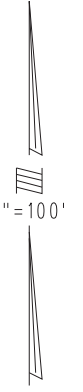
10

15

11

17

19



Ptn. Tract No. 2142, Alpine Glens Park No. 3, M.B. 31/37  
Ptn. Tract No. 1893, Alpine Glens Park No. 2, M.B. 27/46-47  
Parcel Map No. 1618, P.M. 15/94

April 2005

Assessor's Map Book 0334 Page 16 San Bernardino County

REVISED 12/13/21 KA