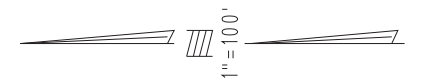
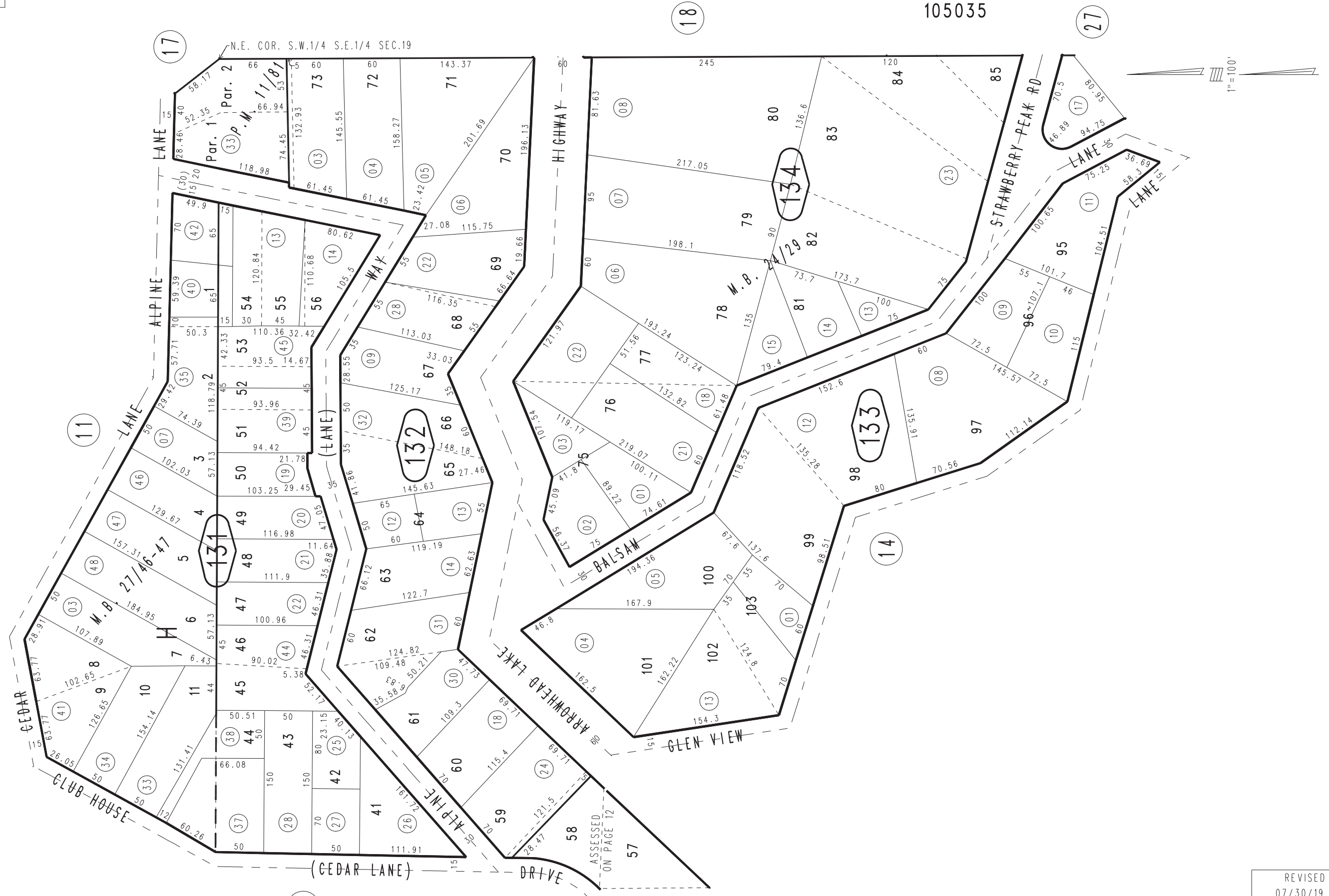


THIS MAP IS FOR THE PURPOSE OF AD VALOREM TAXATION ONLY.

Ptn. S.E.1/4 Sec.19, T.2N.,R.3W., S.B.B.&M.

Rim of The World Unified Tax Rate Area 105035

0334-13



Parcel Map No. 1296, P.M. 11/81
Ptn. Tract No. 1893, Alpine Glens Park No. 2, M.B. 27/46-47
Ptn. Alpine Glens Park, M.B. 24/29

April 2005

Assessor's Map
Book 0334 Page 13
San Bernardino County

REVISED
07/30/19 RU