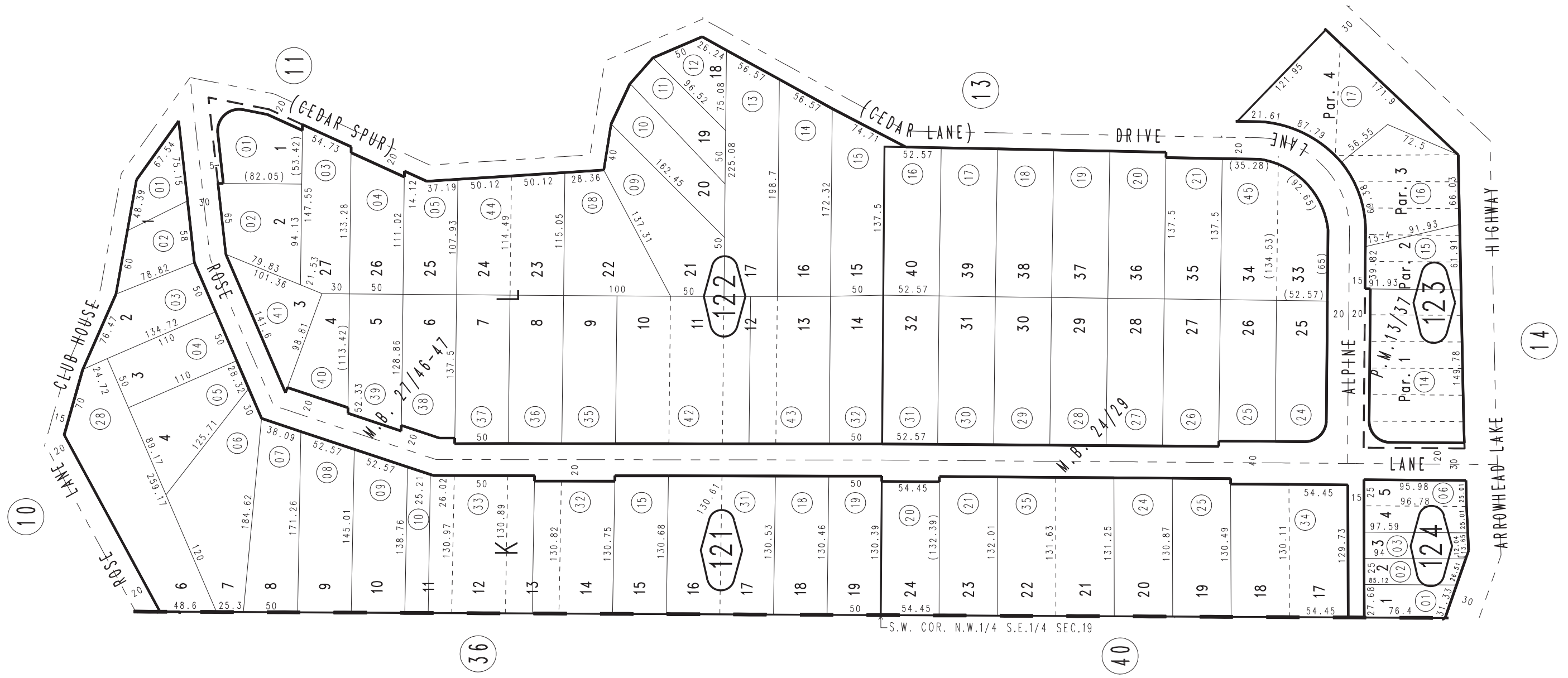
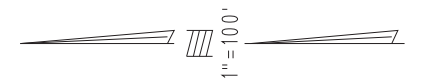


THIS MAP IS FOR THE PURPOSE OF AD VALOREM TAXATION ONLY.

Ptn. S.E.1/4 Sec.19, T.2N.,R.3W., S.B.B.&M.

Rim of The World Unified Tax Rate Area 0334-12 105035



Parcel Map No. 513, P.M. 13/37
Ptn. Tract. No. 1893 Alpine Glens Park No. 2, M.B. 27/46-47
Ptn. Alpine Glens Park, M.B. 24/29

Assessor's Map
Book 0334 Page 12
San Bernardino County

REVISED
06/23/05 GL
04/05/18 KA

April 2005