



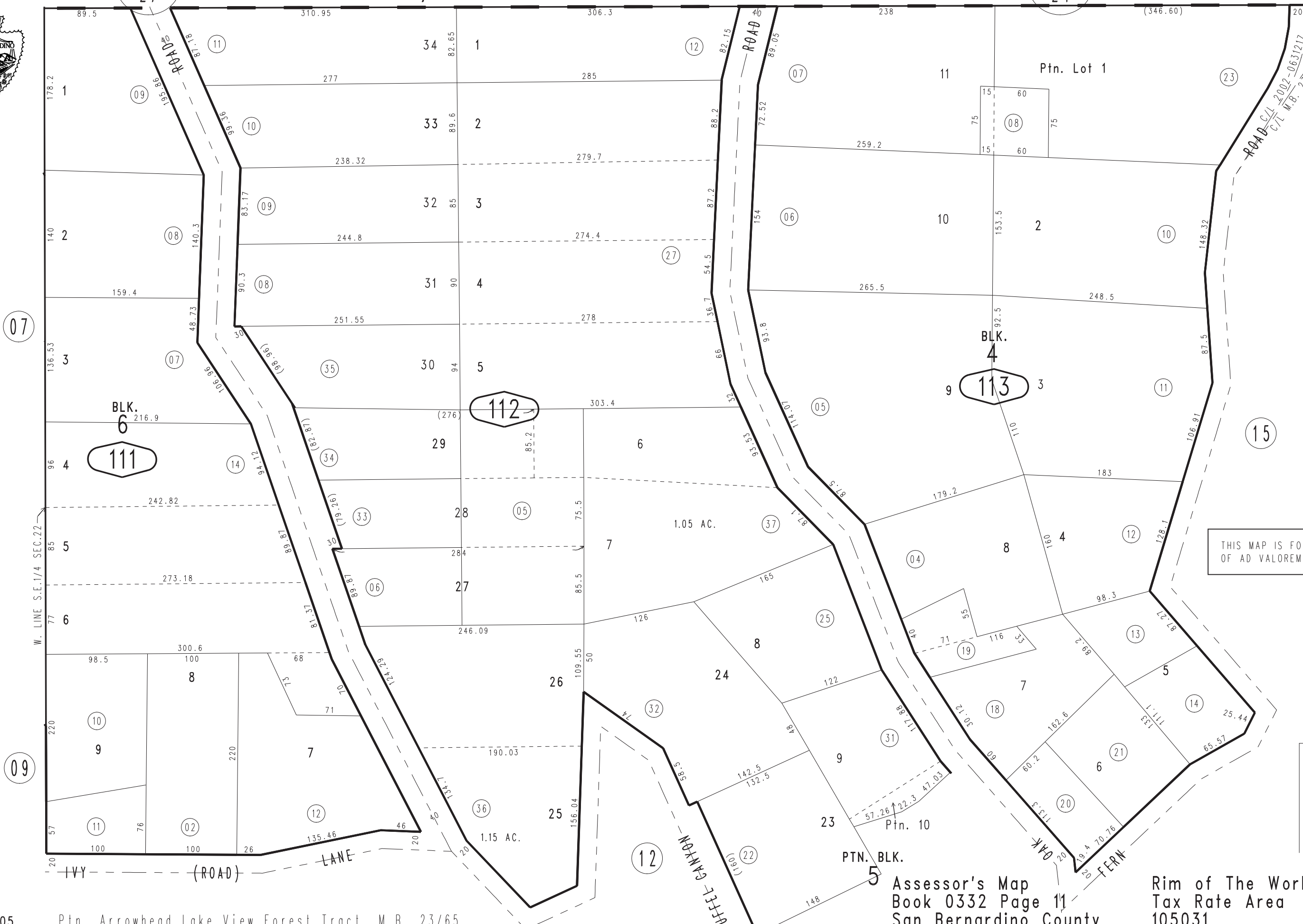
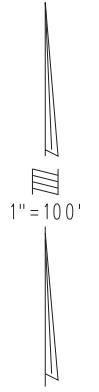
Ptn. S.E.1/4 Sec.22, T.2N.,R.3W., S.B.B.&M.

0331
27

0331
24

0332-11

Ptn. Lot 1
Blk. 4
ASSESSED ON
PG 15



THIS MAP IS FOR THE PURPOSE
OF AD VALOREM TAXATION ONLY.

REVISED
01/23/18 KC
10/18/18 KC