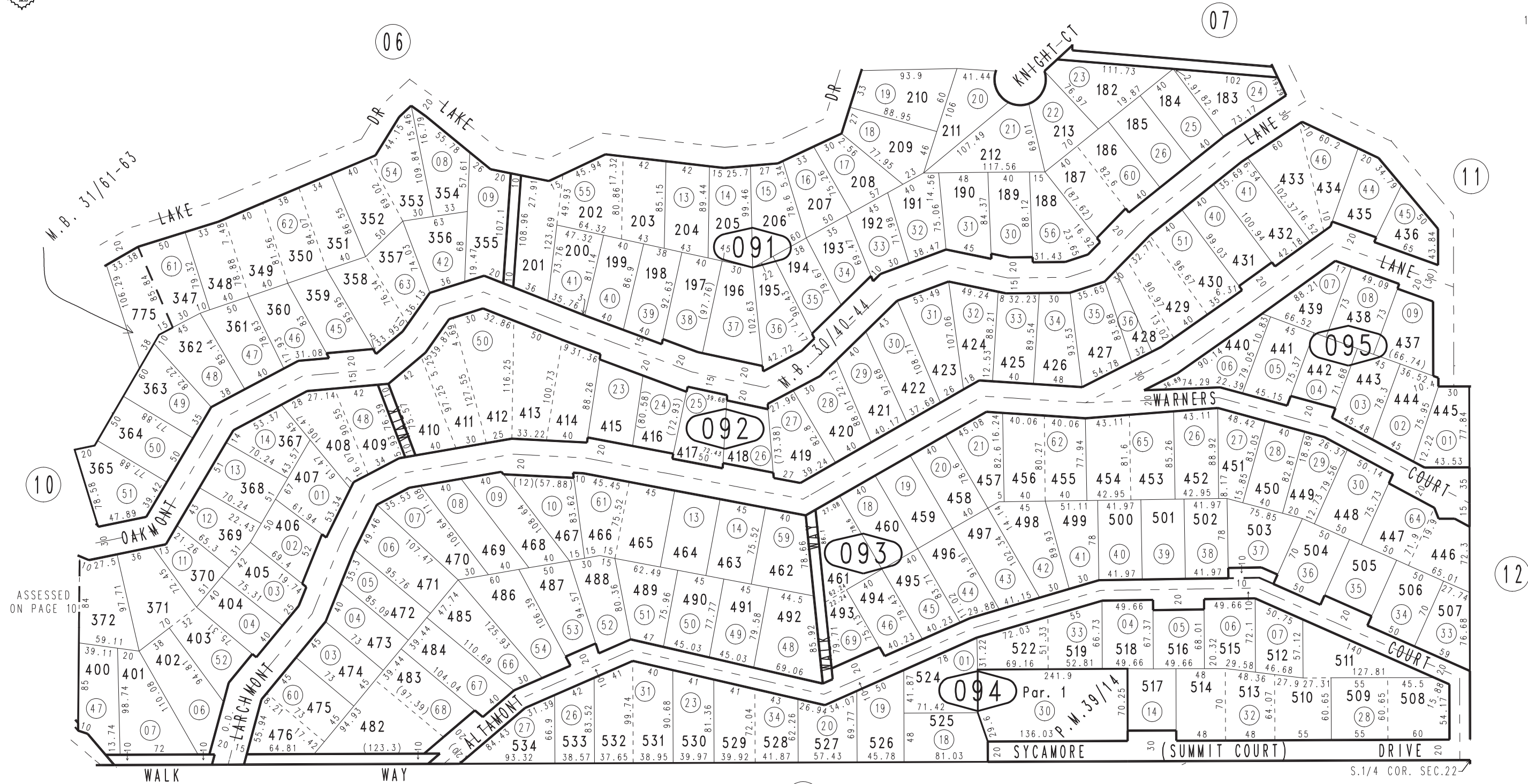
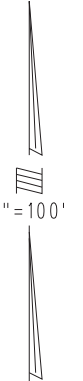


THIS MAP IS FOR THE PURPOSE
OF AD VALOREM TAXATION ONLY.

Ptn. S.1/2 S.W.1/4 Sec.22, T.2N.,R.3W., S.B.B.&M.
Ptn. Arrowhead Villas Tract No. 2084, M.B. 30/40-44

Rim of The World Unified 0332-09
Tax Rate Area
105031



March 2005

Ptn. Arrowhead Villas Tract No. 2195, M.B. 31/61-63
Parcel Map No. 4148, P.M. 39/14

Assessor's Map
Book 0332 Page 09
San Bernardino County

REVISED
08/31/21 KC
08/08/23 KA