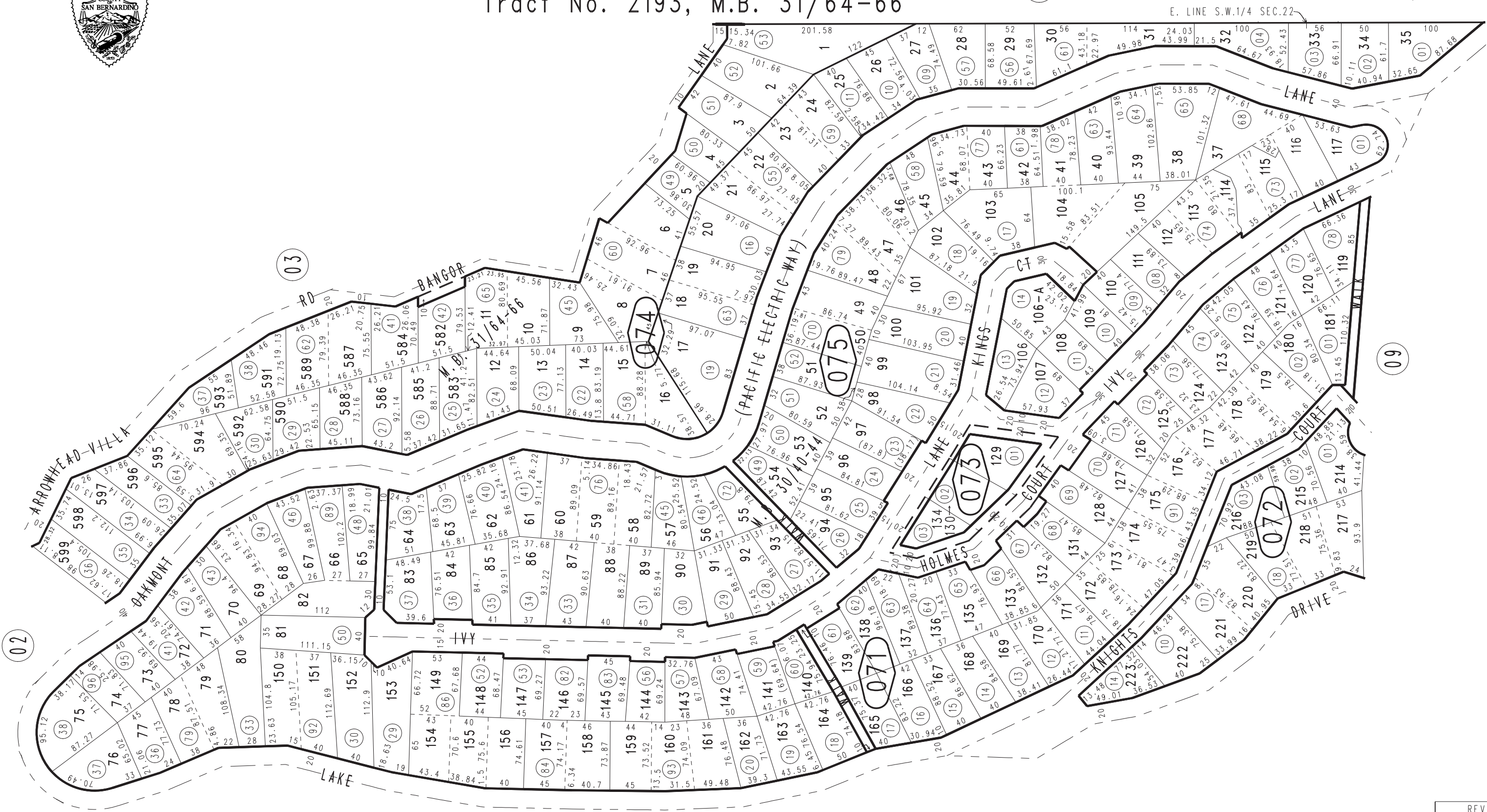
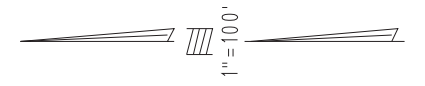


THIS MAP IS FOR THE PURPOSE
OF AD VALOREM TAXATION ONLY.



Ptn. S.W.1/4 Sec.22, T.2N.,R.3W., S.B.B.&M.
Ptn. Arrowhead Villas Tract, Tract No. 2084, M.B. 30/40-44
Ptn. Arrowhead Villas Tract, Unit No. 2
Tract No. 2193, M.B. 31/64-66

Rim of The World Unified 0332-07
Tax Rate Area
105031



March 2005

Ptn. S.W.1/4, Sec. 22
T.2N., R.3W.

Assessor's Map
Book 0332 Page 07
San Bernardino County

REVISED
12/12/19 KA
07/20/20 KC