

THIS MAP IS FOR THE PURPOSE
OF AD VALOREM TAXATION ONLY.



Ptn. S.W.1/4 Sec.22, T.2N.,R.3W., S.B.B.&M.

0332-06

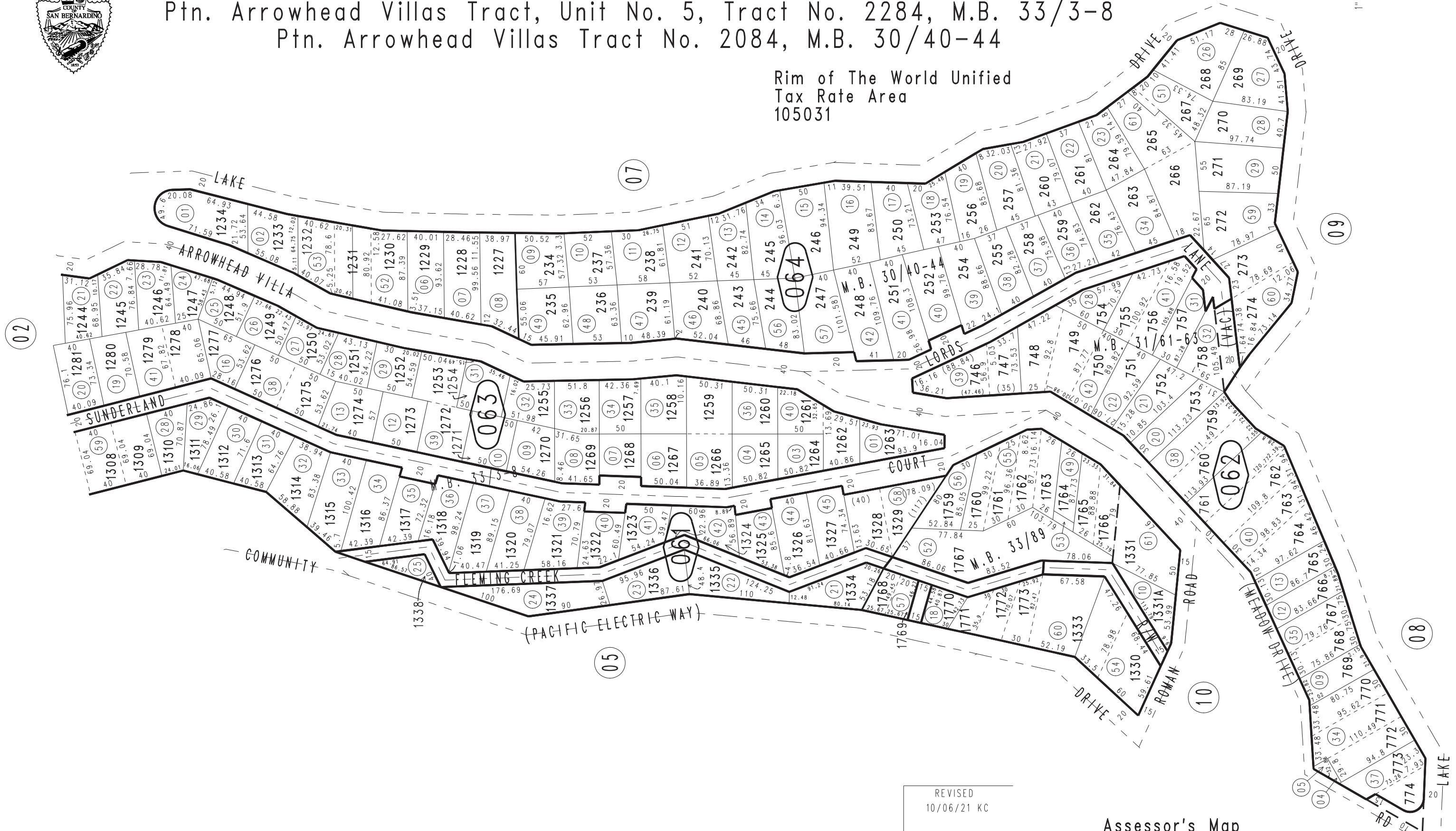
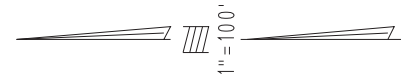
Arrowhead Villas Tract, Unit No. 6, Tract No. 2367, M.B. 33/89

Ptn. Arrowhead Villas Tract, Unit No. 3, Tract No. 2195, M.B. 31/61-63

Ptn. Arrowhead Villas Tract, Unit No. 5, Tract No. 2284, M.B. 33/3-8

Ptn. Arrowhead Villas Tract No. 2084, M.B. 30/40-44

Rim of The World Unified
Tax Rate Area
105031



REVISED
10/06/21 KC

Assessor's Map
Book 0332 Page 06
San Bernardino County