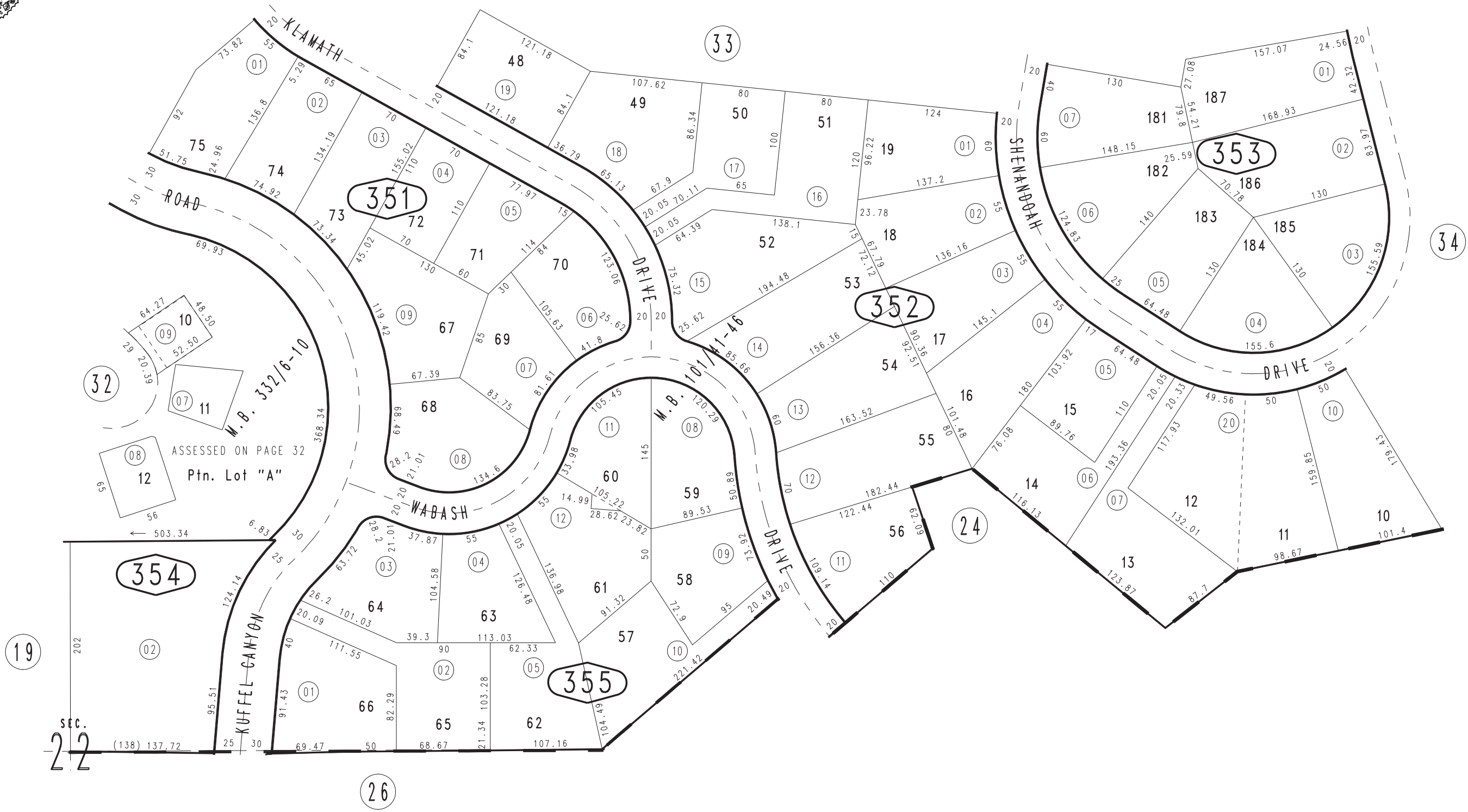


THIS MAP IS FOR THE PURPOSE OF AD VALOREM TAXATION ONLY.

Ptn. N.E.1/4 Sec.22, T.2N.,R.3W., S.B.B.&M.

Rim of The World Unified Tax Rate Area 105017

0331 - 35



ASSESSED ON PAGE 32 Ptn. Lot "A"

April 2005

Ptn. Tract No. 18389-1, M.B. 332/6-10
Ptn. Tract No. 7514, M.B. 101/41-46, Arrowhead Woods Tract No. 109

Assessor's Map
Book 0331 Page 35
San Bernardino County

REVISED
12/19/11 RU