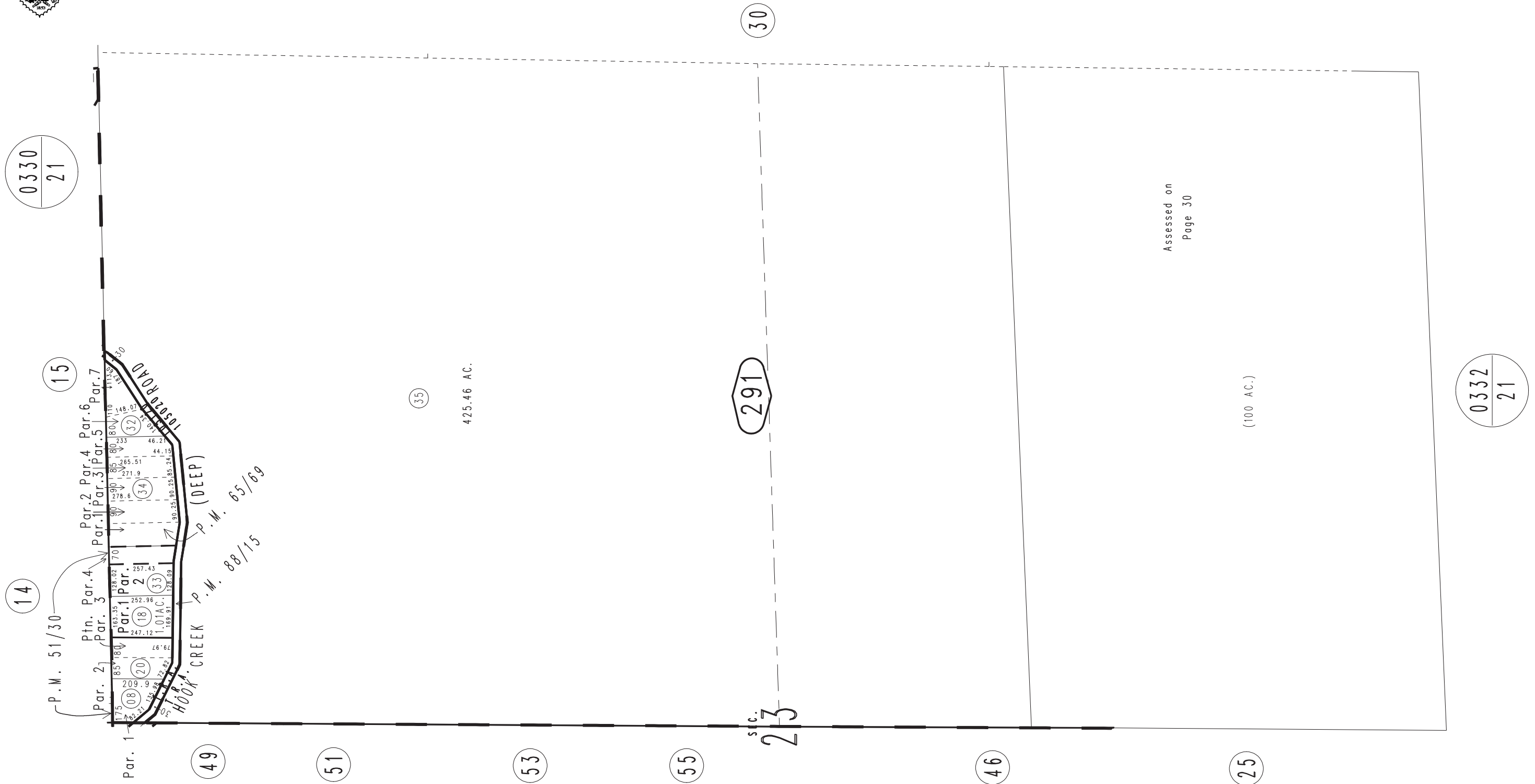
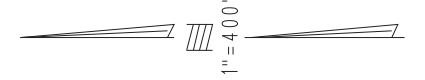


THIS MAP IS FOR THE PURPOSE  
OF AD VALOREM TAXATION ONLY.

E.1/2 Sec.23, T.2N.,R.3W., S.B.B.&M.

Rim of The World Unified 0331 - 29  
Tax Rate Area  
105020,105120



Assessed on  
Page 30

April 2005

Parcel Map No. 8389, P.M. 88/15  
Parcel Map No. 5864, P.M. 65/69  
Parcel Map No. 5156, P.M. 49/18, Amending Map, P.M. 51/30

Assessor's Map  
Book 0331 Page 29  
San Bernardino County

REVISED  
06/08/22 AP  
03/05/24 KA