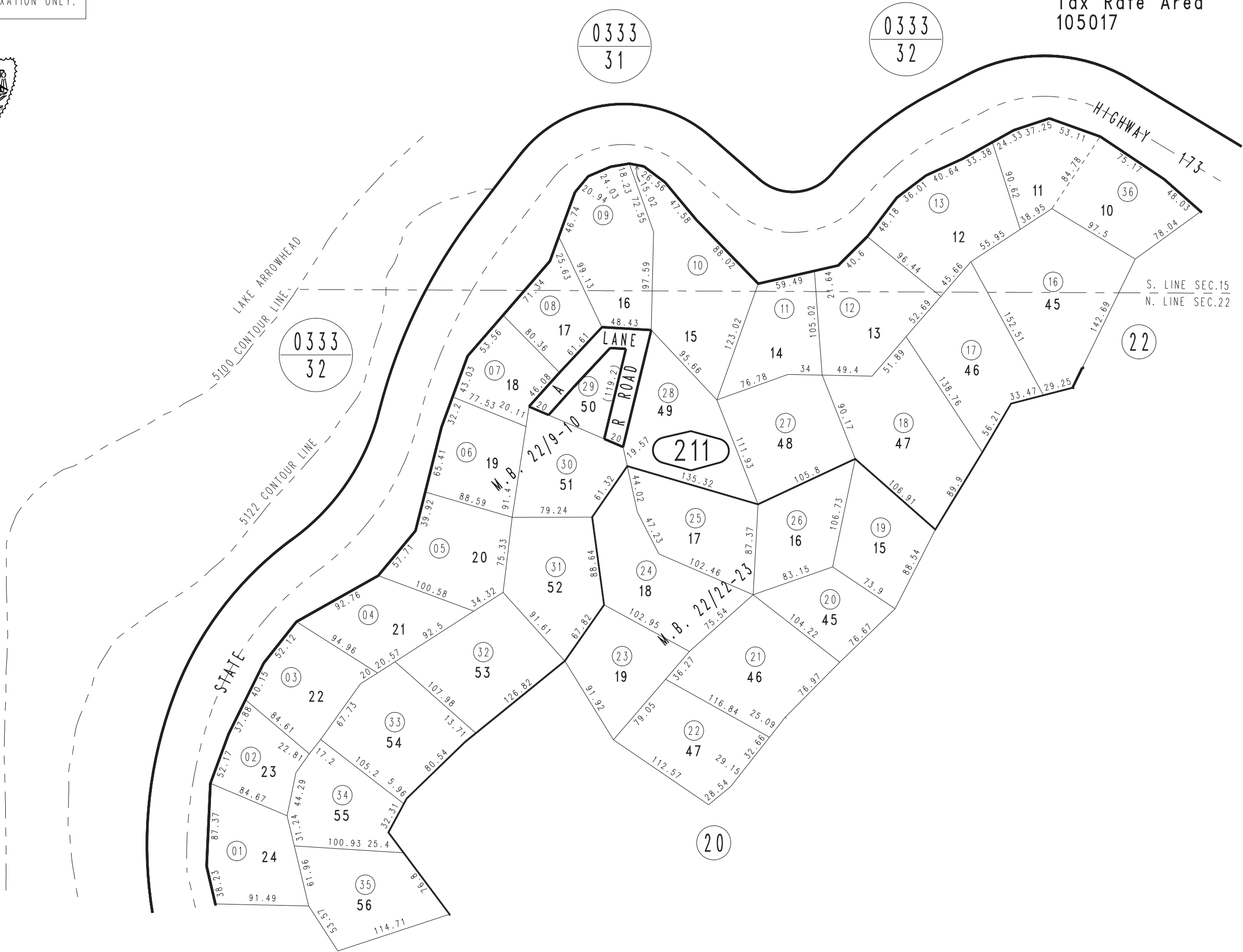


THIS MAP IS FOR THE PURPOSE OF AD VALOREM TAXATION ONLY.



Ptn. S.1/2 Sec.15, Ptn. N.1/2 Sec.22, T.2N.,R.3W., S.B.B.&M. Rim of The World Unified Tax Rate Area 105017 0331 - 21



April 2005

Ptn. Arrowhead Woods Tr. No. 56, M.B. 22/9-10
Ptn. Arrowhead Woods Tr. No. 59, M.B. 22/22-23

Assessor's Map
Book 0331 Page 21
San Bernardino County

REVISED
12/02/15 KC