

THIS MAP IS FOR THE PURPOSE OF AD VALOREM TAXATION ONLY.



Ptn. S.E.1/4 Sec.14, T.2N.,R.3W., S.B.B.&M.

Ptn. Tr. No. 2172, Lake-Brook Park Unit No. 2, M.B. 31/43-47

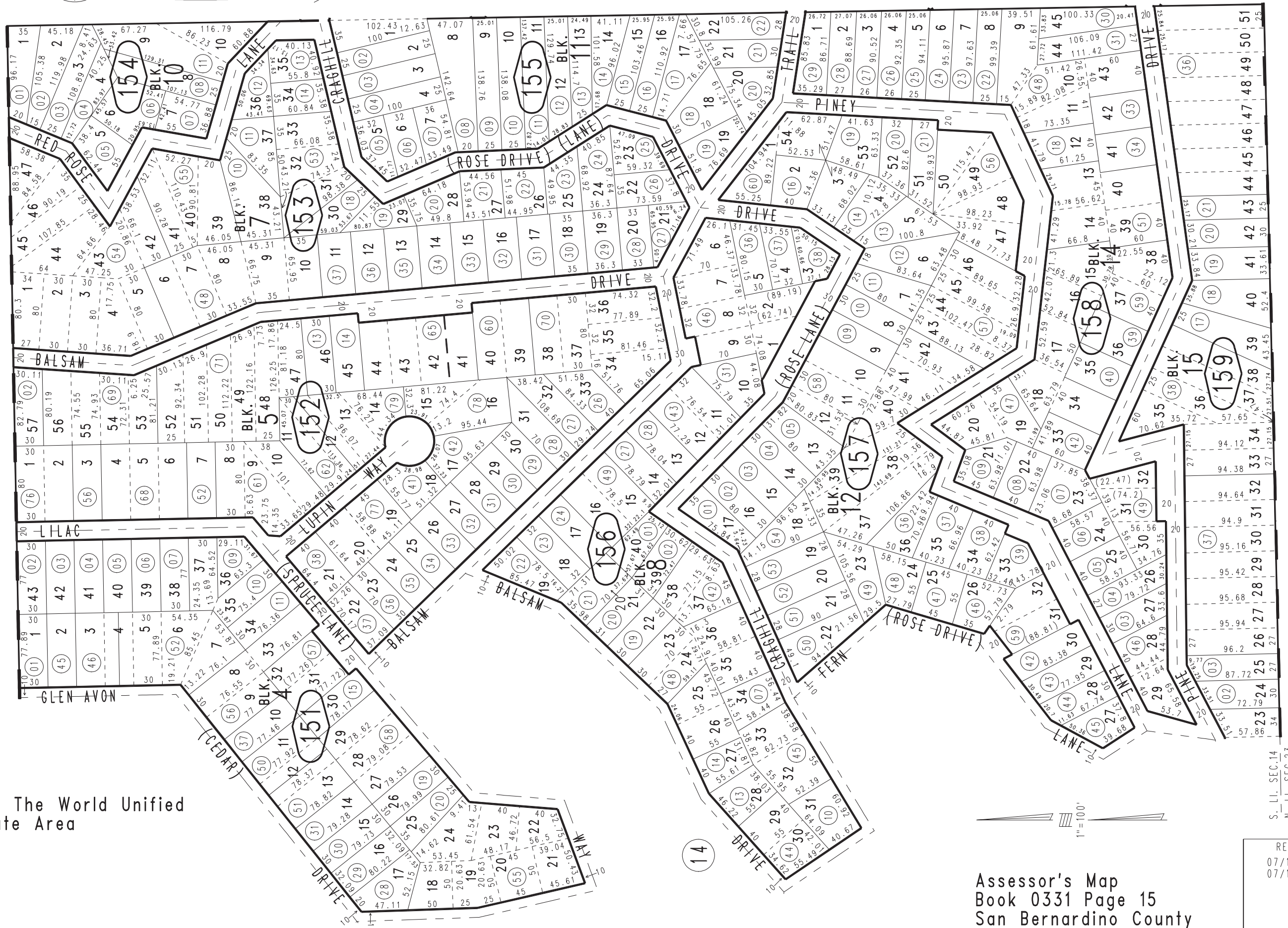
0331 - 15

0330
20

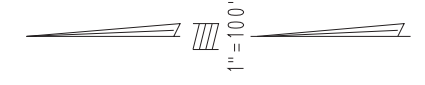
0330
21

0330
01

29



Rim of The World Unified Tax Rate Area 105122



S. LI. SEC. 14
N. LI. SEC. 23

Assessor's Map
Book 0331 Page 15
San Bernardino County

REVISED
07/12/23 KA
07/17/24 CA