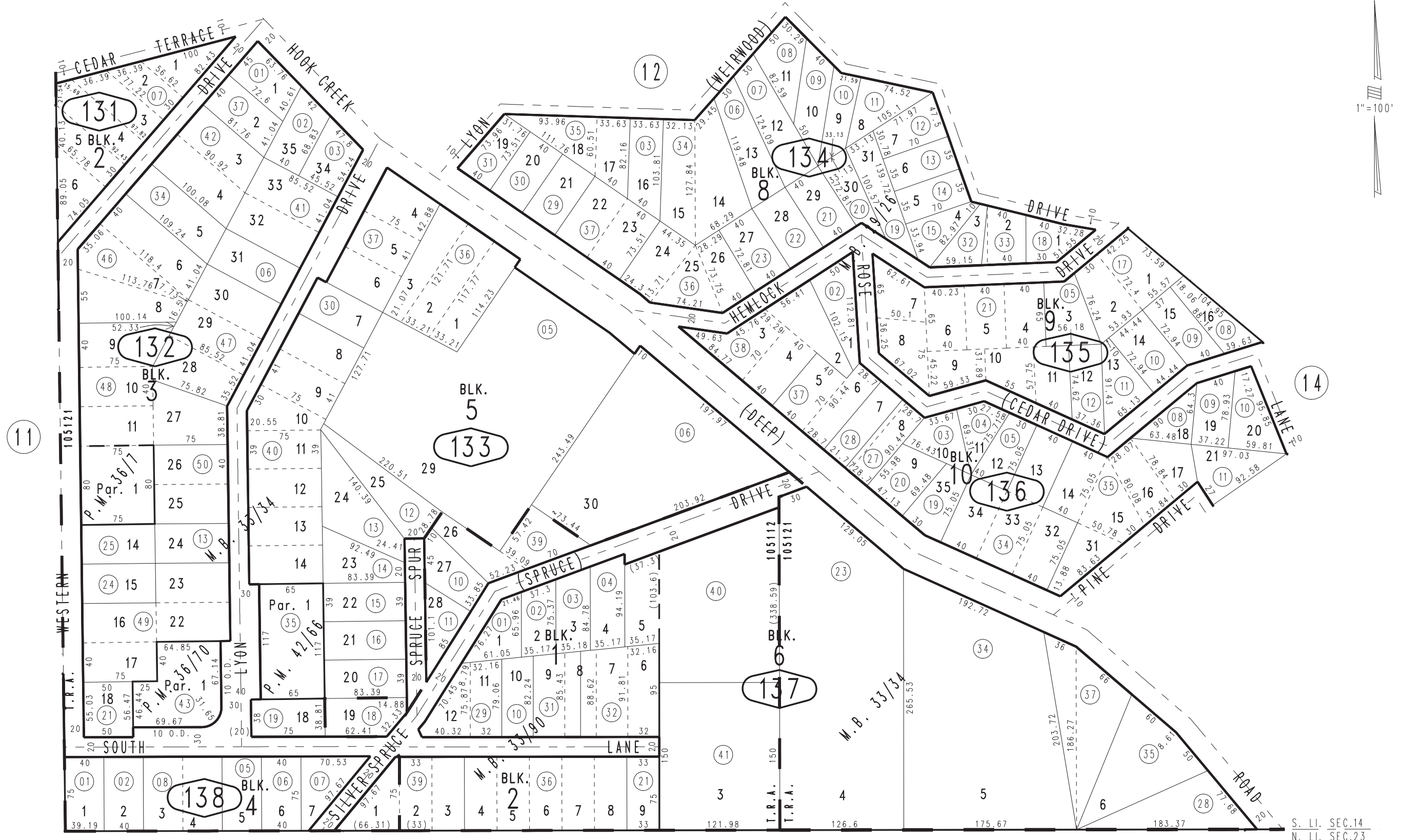


THIS MAP IS FOR THE PURPOSE  
OF AD VALOREM TAXATION ONLY.



Ptn. S.E.1/4 S.W.1/4 Sec.14, T.2N.,R.3W., S.B.B.&M.

Rim of The World Unified 0331 - 13  
Tax Rate Area  
105112 105121



Parcel Map No. 4080, P.M. 39/7  
Parcel Map No. 3571, P.M. 36/70  
Tr. 2343, Lake-Brook Park Unit No. 6, M.B. 33/90  
Ptn. Tr. 2322, Lake-Brook Park Unit No. 5, M.B. 33/34  
Ptn. Tr. 2026, Lake-Brook Park, M.B. 29/26

Parcel Map No. 3681, P.M. 42/66

Assessor's Map  
Book 0331 Page 13  
San Bernardino County

S. LI. SEC.14  
N. LI. SEC.23

REVISED  
08/16/17 KC