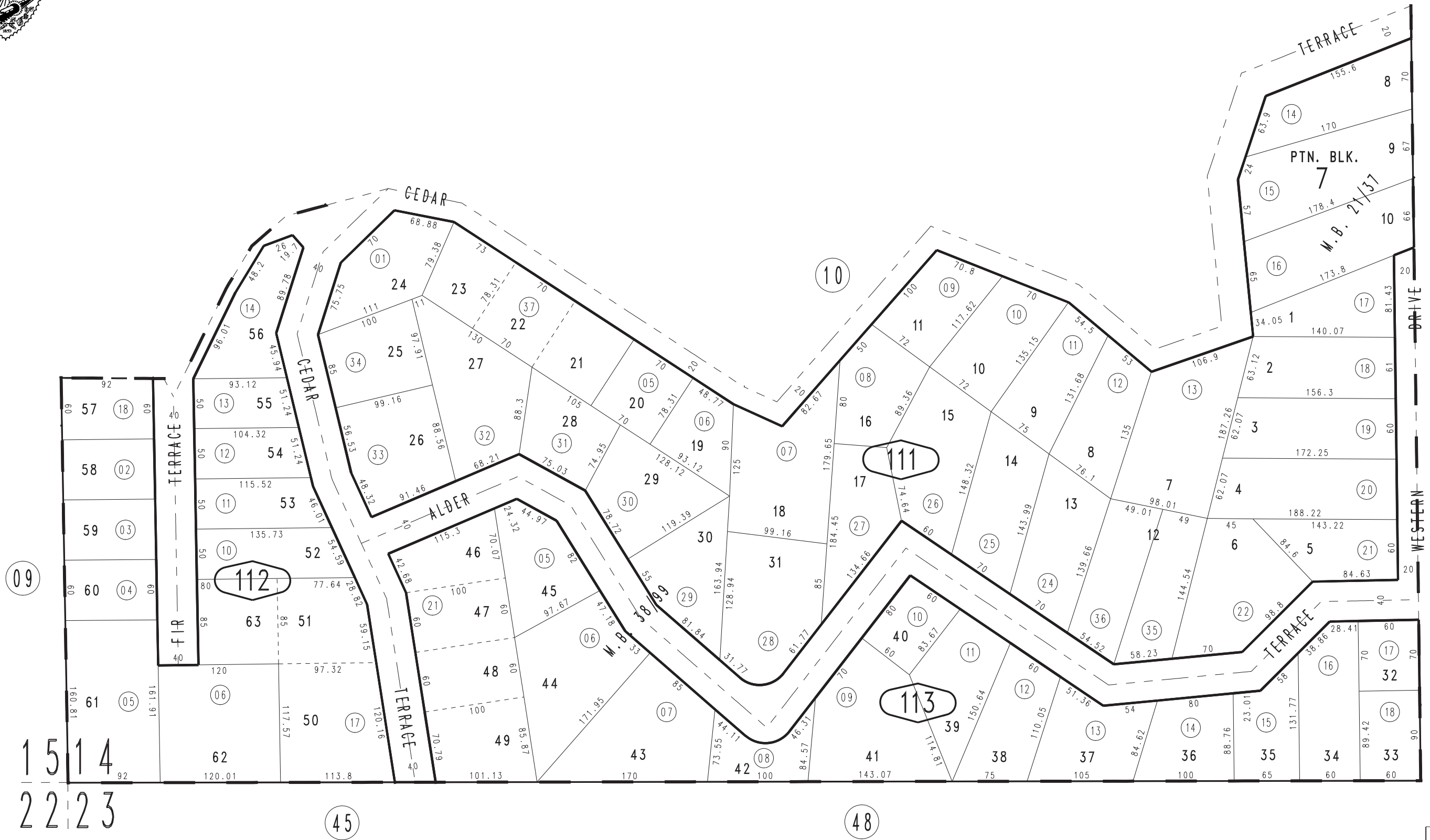


THIS MAP IS FOR THE PURPOSE OF AD VALOREM TAXATION ONLY.

Ptn. S.W.1/4 S.W.1/4 Sec.14, T.2N.,R.3W., S.B.B.&M.

Rim of The World Unified Tax Rate Area 105078 0331 - 11



April 2005

Tr. No. 2804, Cedar Glen Tr. No. 3, M.B. 38/99  
Ptn. Cedar Glen Sub. No. 2, M.B. 21/37

Assessor's Map  
Book 0331 Page 11  
San Bernardino County

REVISED  
02/04/16 KC