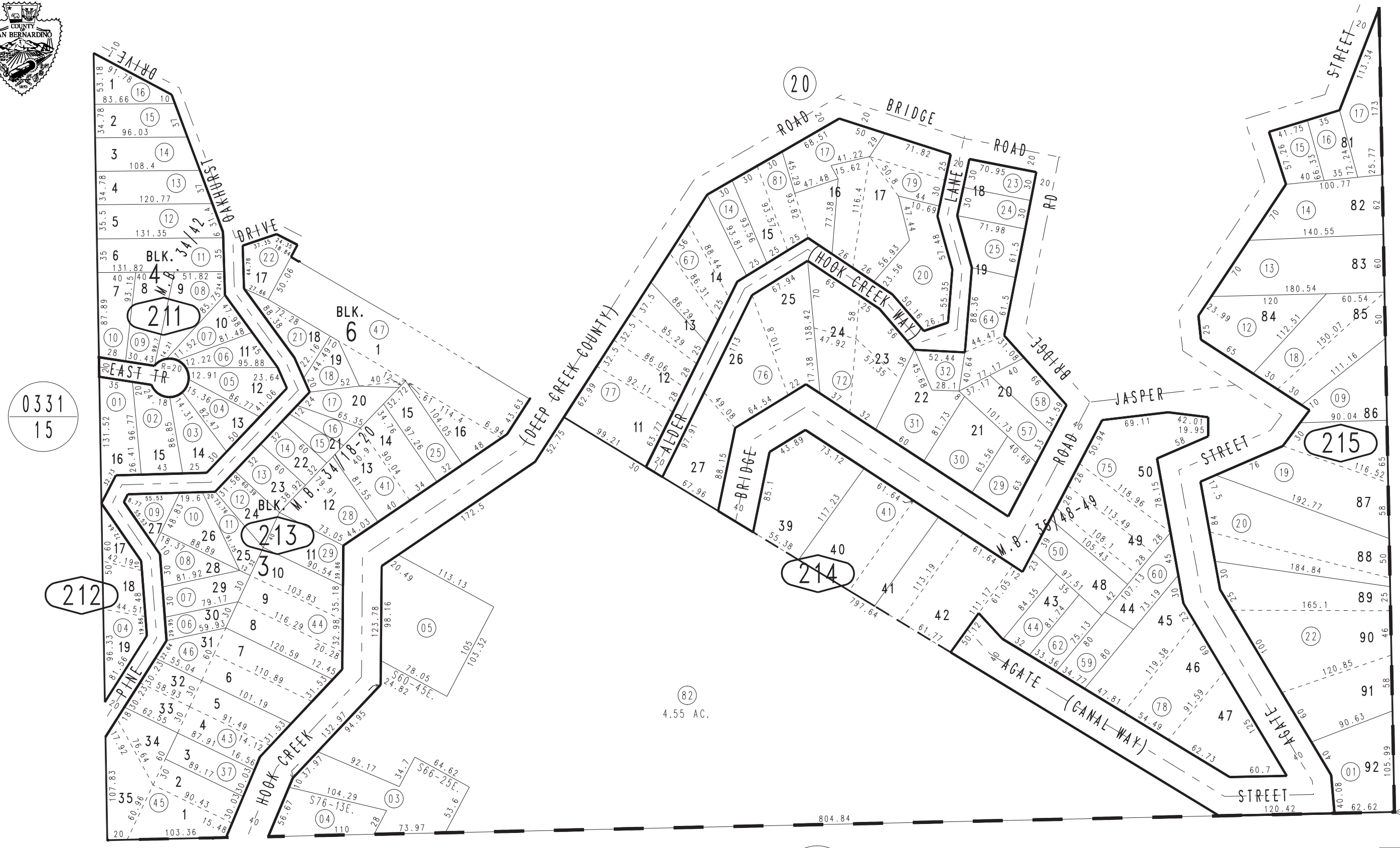


THIS MAP IS FOR THE PURPOSE OF AD VALOREM TAXATION ONLY.

Ptn. S.E.1/4 Sec.14, T.2N.,R.3W., S.B.B.&M.

Rim of The World Unified Tax Rate Area 105122

0330-21



0331  
15

19

0331  
29

Ptn. Lakebrook Park, Unit No. 9, Tract No. 2412, M.B. 34/42  
Ptn. Lakebrook Park, Unit No. 7, Tract No. 2344, M.B. 34/18-20  
Ptn. Lakebrook Park, Unit No. 10, Tract No. 2469, M.B. 35/48-49

May 2005

Assessor's Map  
Book 0330 Page 21  
San Bernardino County

REVISED  
06/04/24 CA

S.E. COR. SEC.14  
T.2N.,R.3W.