

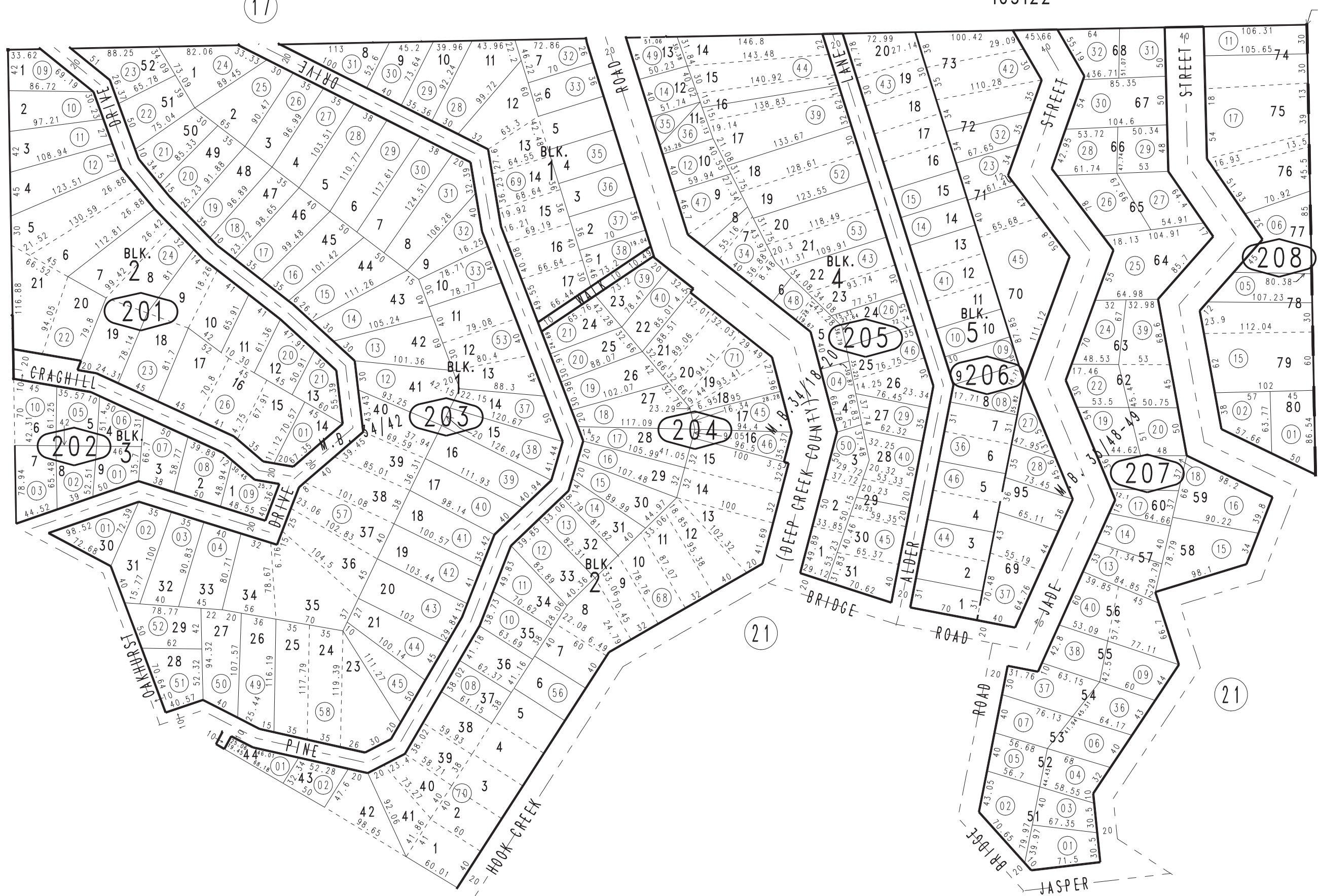
THIS MAP IS FOR THE PURPOSE OF AD VALOREM TAXATION ONLY.

Ptn. S.E.1/4 Sec.14., T.2N.,R.3W., S.B.B.&M.

Rim of The World Unified Tax Rate Area 0330-20 105122



0331
15



N.E. COR. S.E.1/4 S.E.1/4 SEC.14



Ptn. Lake-Brook Park, Unit No. 10, Tract No. 2469, M.B. 35/48-49
Ptn. Lake-Brook Park, Unit No. 9, Tract No. 2412, M.B. 34/42
Ptn. Lake-Brook Park, Unit No. 7, Tract No. 2344, M.B. 34/18-20

May 2005

Assessor's Map
Book 0330 Page 20
San Bernardino County

REVISED
07/06/20 KC