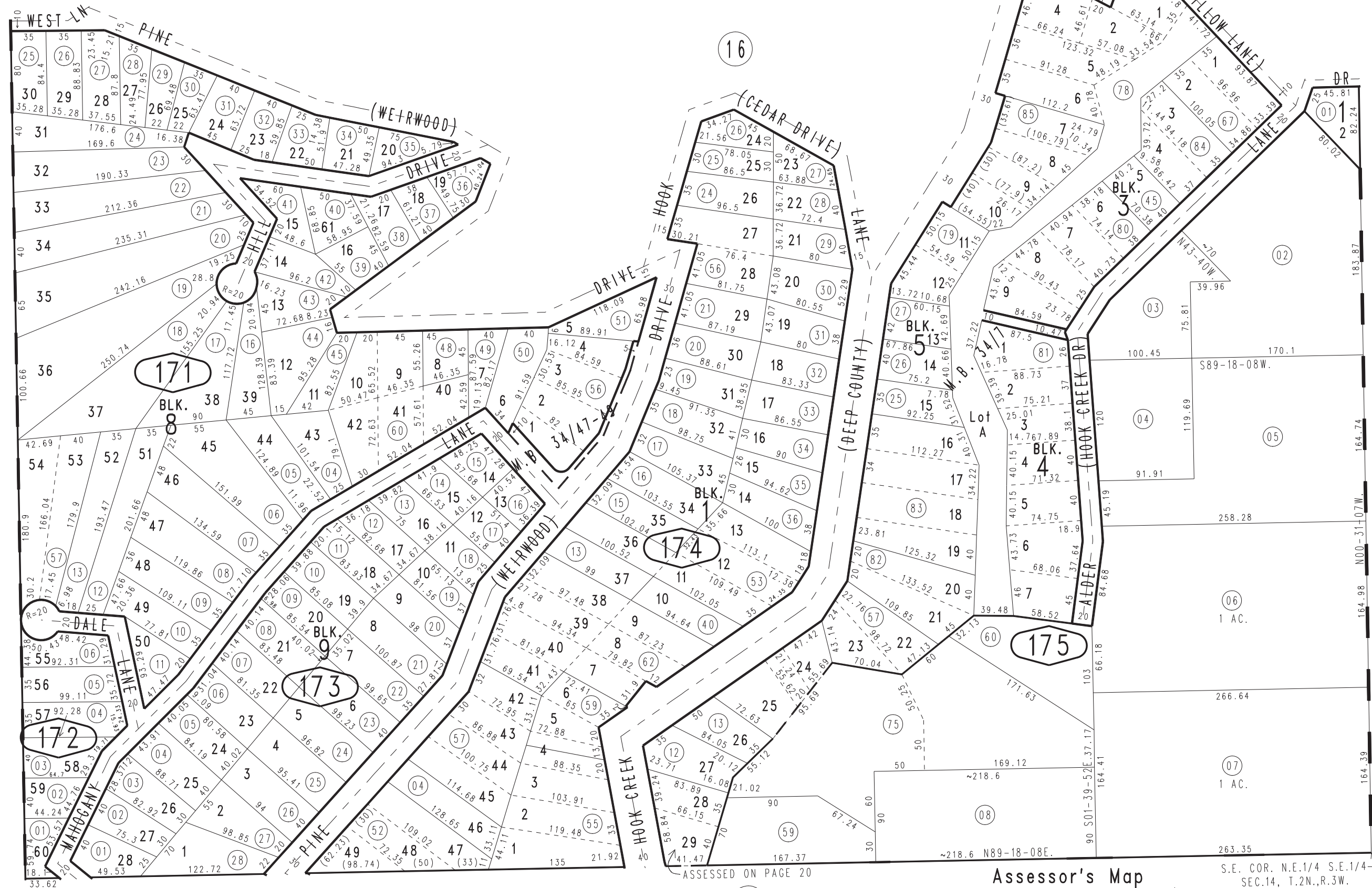


THIS MAP IS FOR THE PURPOSE OF AD VALOREM TAXATION ONLY.

Ptn. S.E.1/4 Sec.14, T.2N.,R.3W., S.B.B.&M.

Rim of The World Unified Tax Rate Area 105122

0330-17



Ptn. Lakebrook Park, Unit No. 3, Tract No. 2191, M.B. 34/7
Ptn. Lakebrook Park, Unit No. 8, Tract No. 2411, M.B. 34/47-49

Assessor's Map Book 0330 Page 17 San Bernardino County

S.E. COR. N.E.1/4 S.E.1/4 SEC.14, T.2N.,R.3W.

REVISED 08/28/21 RU