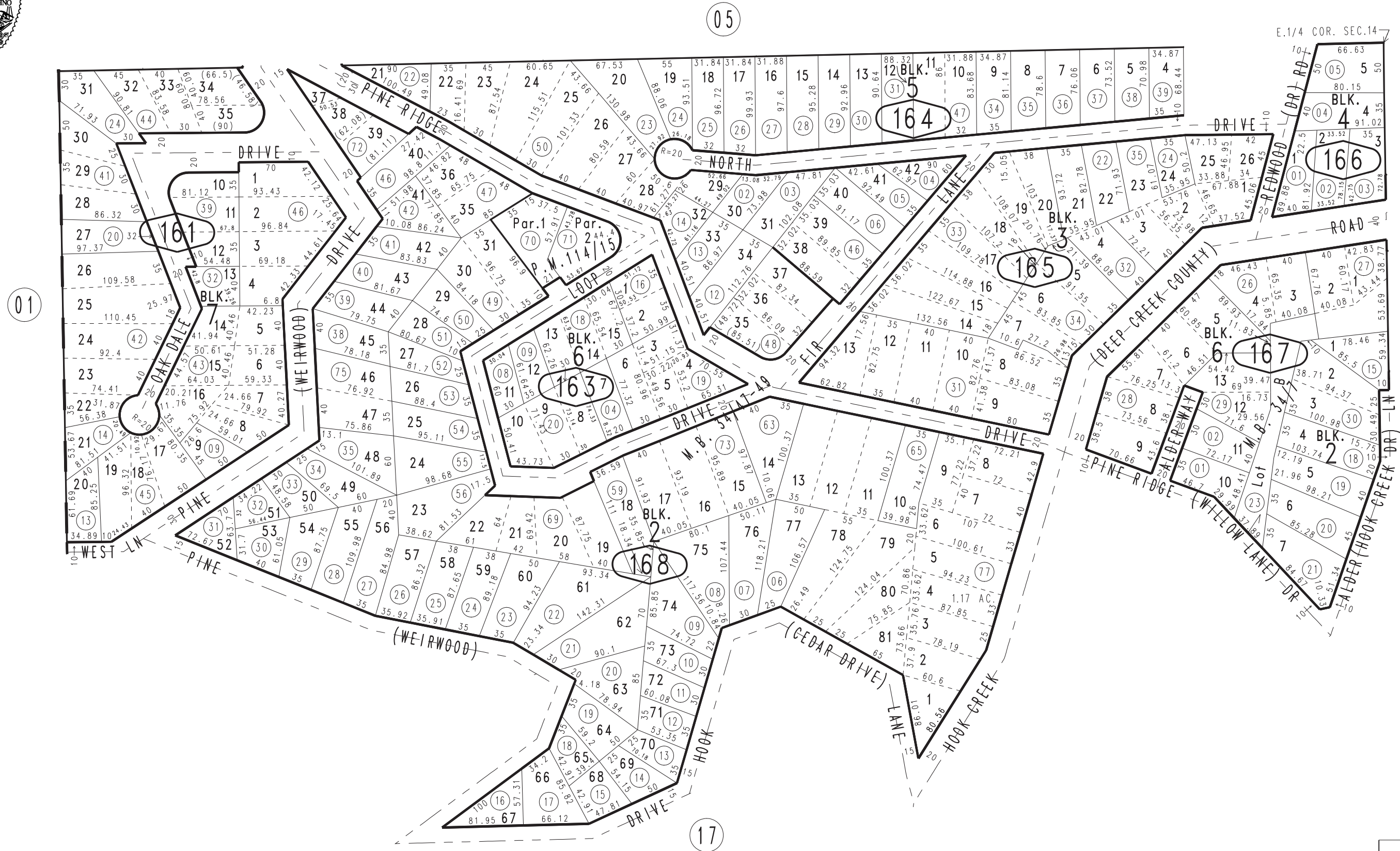
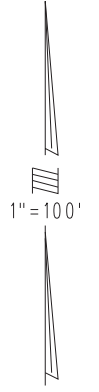


THIS MAP IS FOR THE PURPOSE OF AD VALOREM TAXATION ONLY.

Ptn. S.E.1/4 Sec.14., T.2N.,R.3W., S.B.B.&M.

Rim of The World Unified Tax Rate Area 0330-16 105122



Parcel Map No. 9940, P.M. 114/15
Ptn. Lake-Brook Park, Unit No. 3, Tract No. 2191, M.B. 34/7
Ptn. Lake-Brook Park, Unit No. 8, Tract No. 2411, M.B. 34/47-49

Assessor's Map
Book 0330 Page 16
San Bernardino County

REVISED
02/26/20 KA-MC
04/27/21 KA
02/23/22 KC
03/15/22 KC