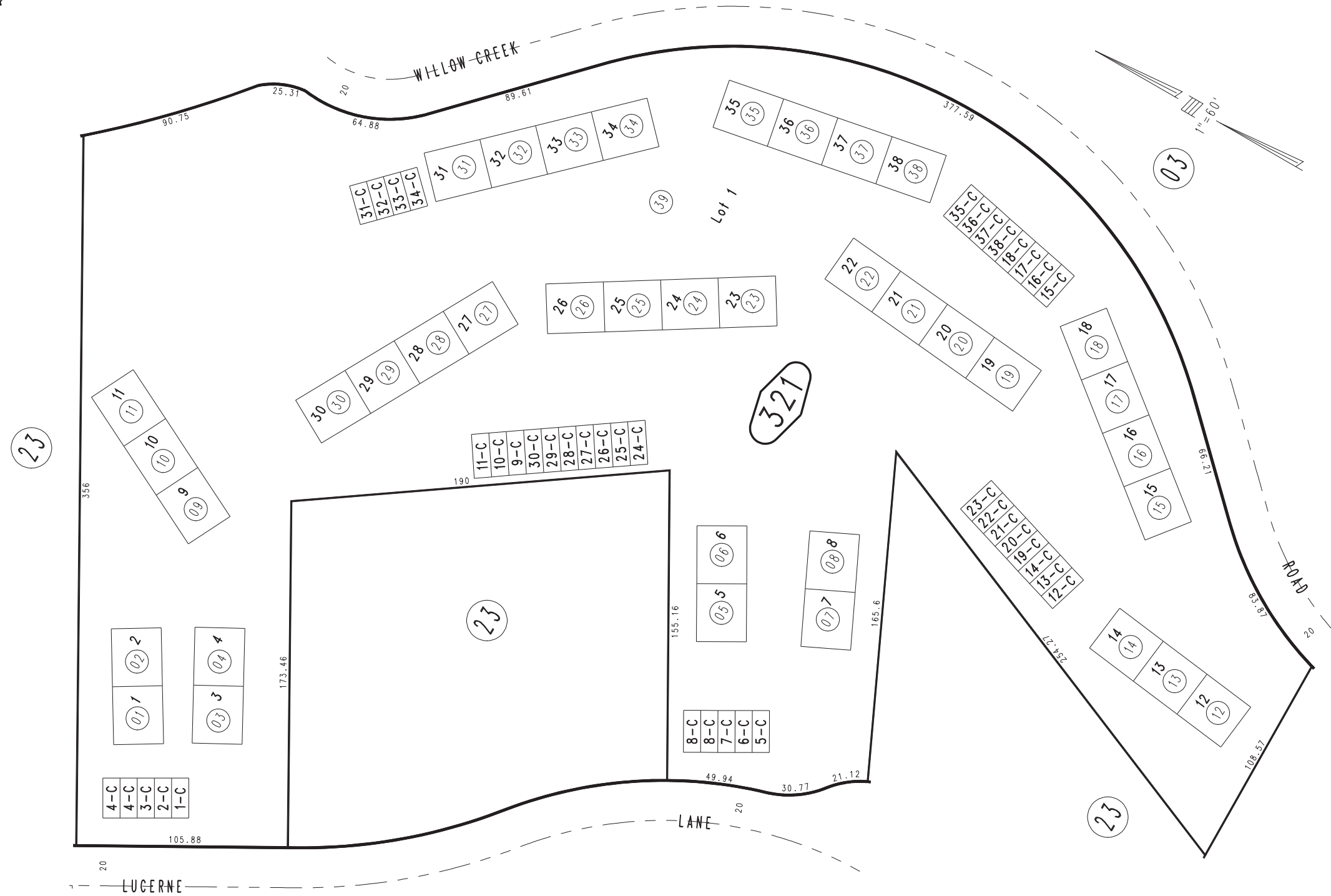


THIS MAP IS FOR THE PURPOSE
OF AD VALOREM TAXATION ONLY.



Tract No. 7334, M.B. 92/24-25
And Condominium Plan Rec. O.R.
Bk. 6530 Pg. 760-798, Bk. 6576 Pg. 269, 270

Rim of The World Unified
Tax Rate Area
105017



NOTE: UNIT C-DENOTES GARAGE AREA

REVISED
09/17/24 KC

Assessor's Map
Book 0329 Page 32
San Bernardino County

Ptn. S.W.1/4, Sec. 10
T.2N., R.3W.