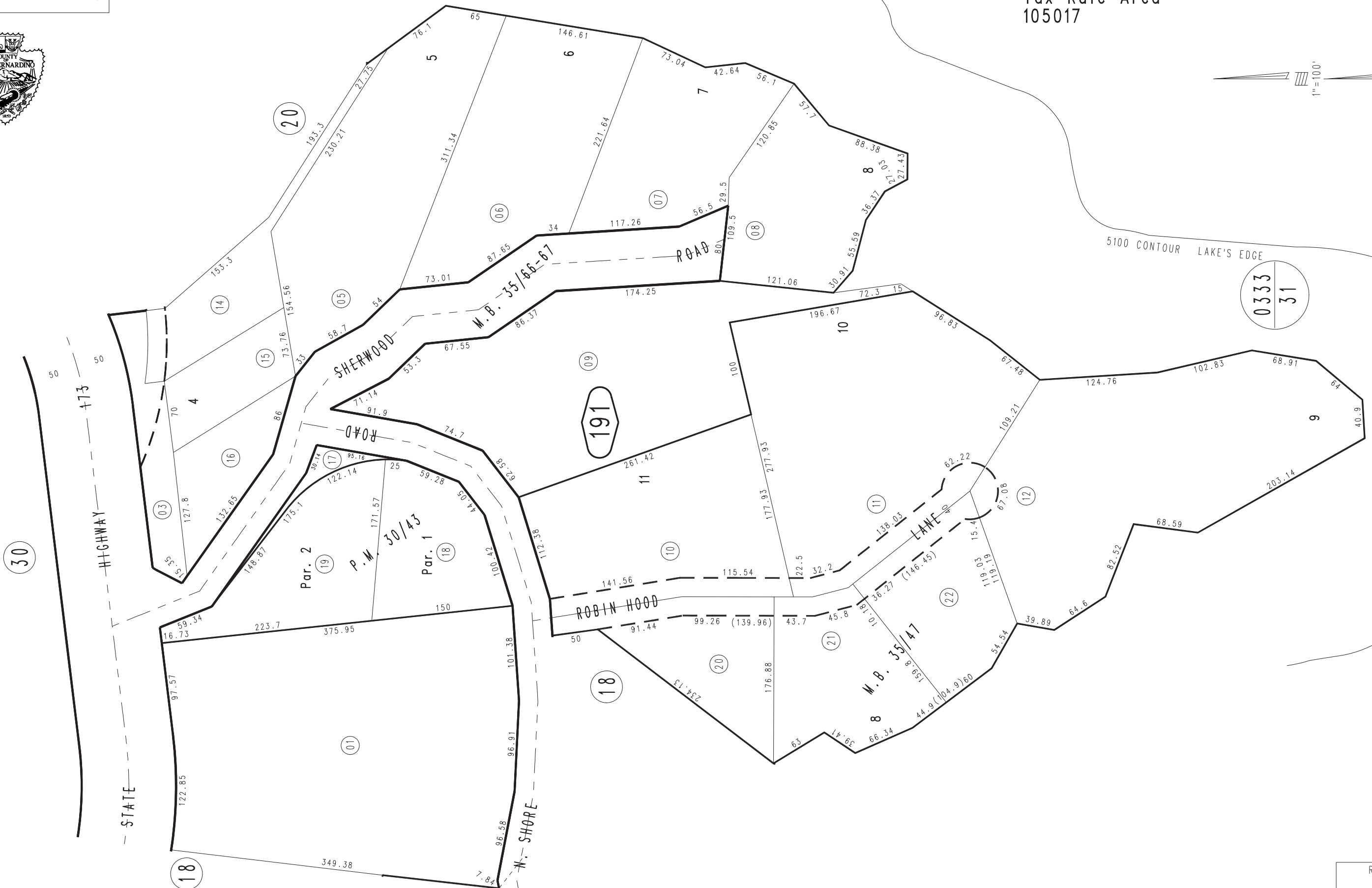


THIS MAP IS FOR THE PURPOSE  
OF AD VALOREM TAXATION ONLY.



Ptn. S.E.1/4, Sec.10, T.2N.,R.3W., S.B.B.&M.

Rim of The World Unified 0329-19  
Tax Rate Area  
105017



Ptn. Tract No. 2481, M.B. 35/47  
Ptn. Tract No. 2499, M.B. 35/66-67  
Parcel Map No. 3275, P.M. 30/43

April 2005

Assessor's Map  
Book 0329 Page 19  
San Bernardino County

REVISED