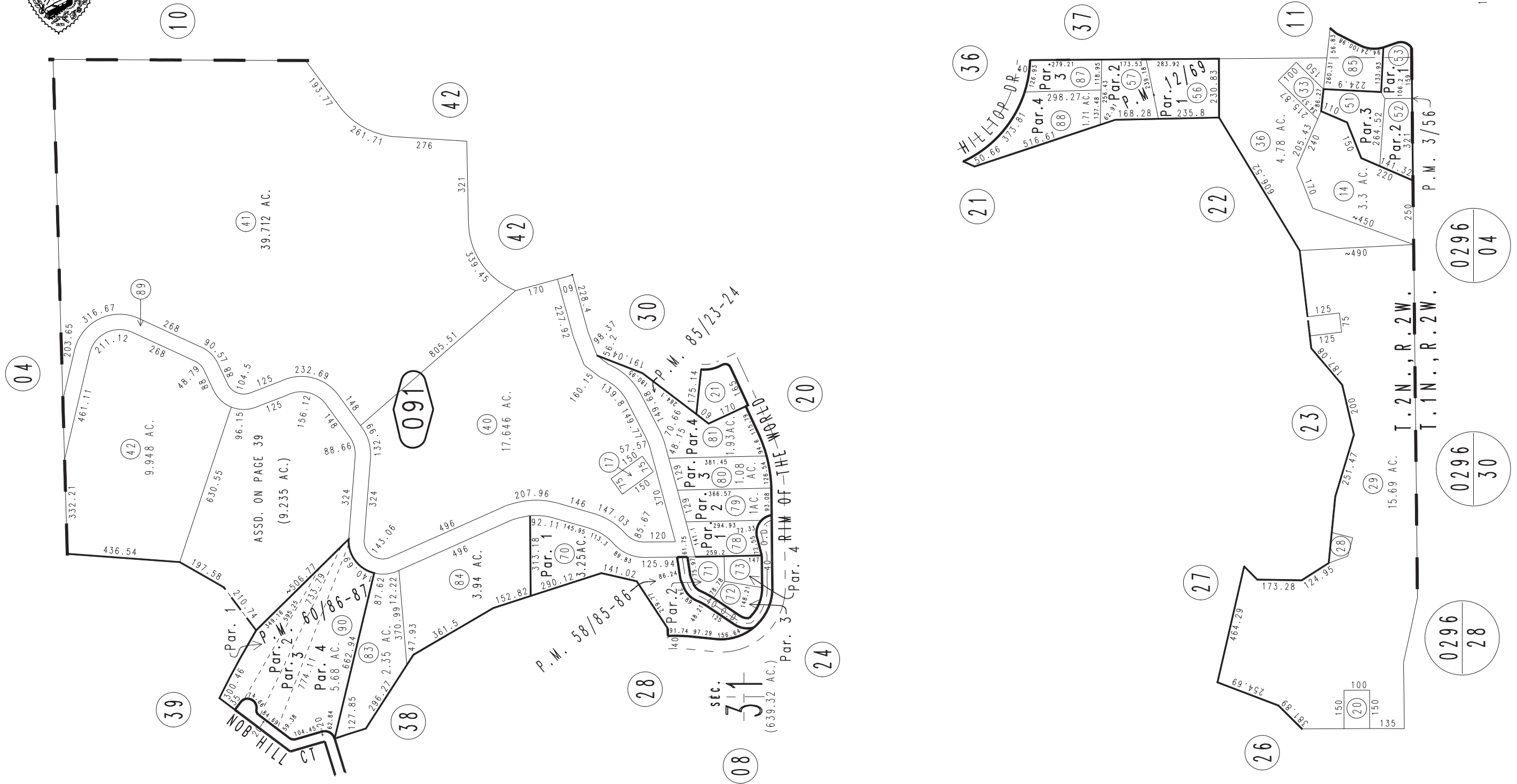
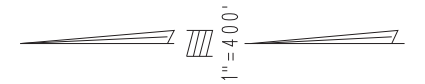


THIS MAP IS FOR THE PURPOSE OF AD VALOREM TAXATION ONLY.

E.1/2 Sec.31, T.2N.,R.2W., S.B.B.&M.

Rim of The World Unified Tax Rate Area 105027

0328-09



Parcel Map No. 8148, P.M. 85/23-24
Parcel Map No. 5341, P.M. 60/86-87
Parcel Map No. 5053, P.M. 58/85-86
Parcel Map No. 1097, P.M. 12/69
Parcel Map No. 341, P.M. 3/56

April 2005

Assessor's Map
Book 0328 Page 09
San Bernardino County

REVISED
09/25/18 KC-MC
11/05/20 KC-MC