

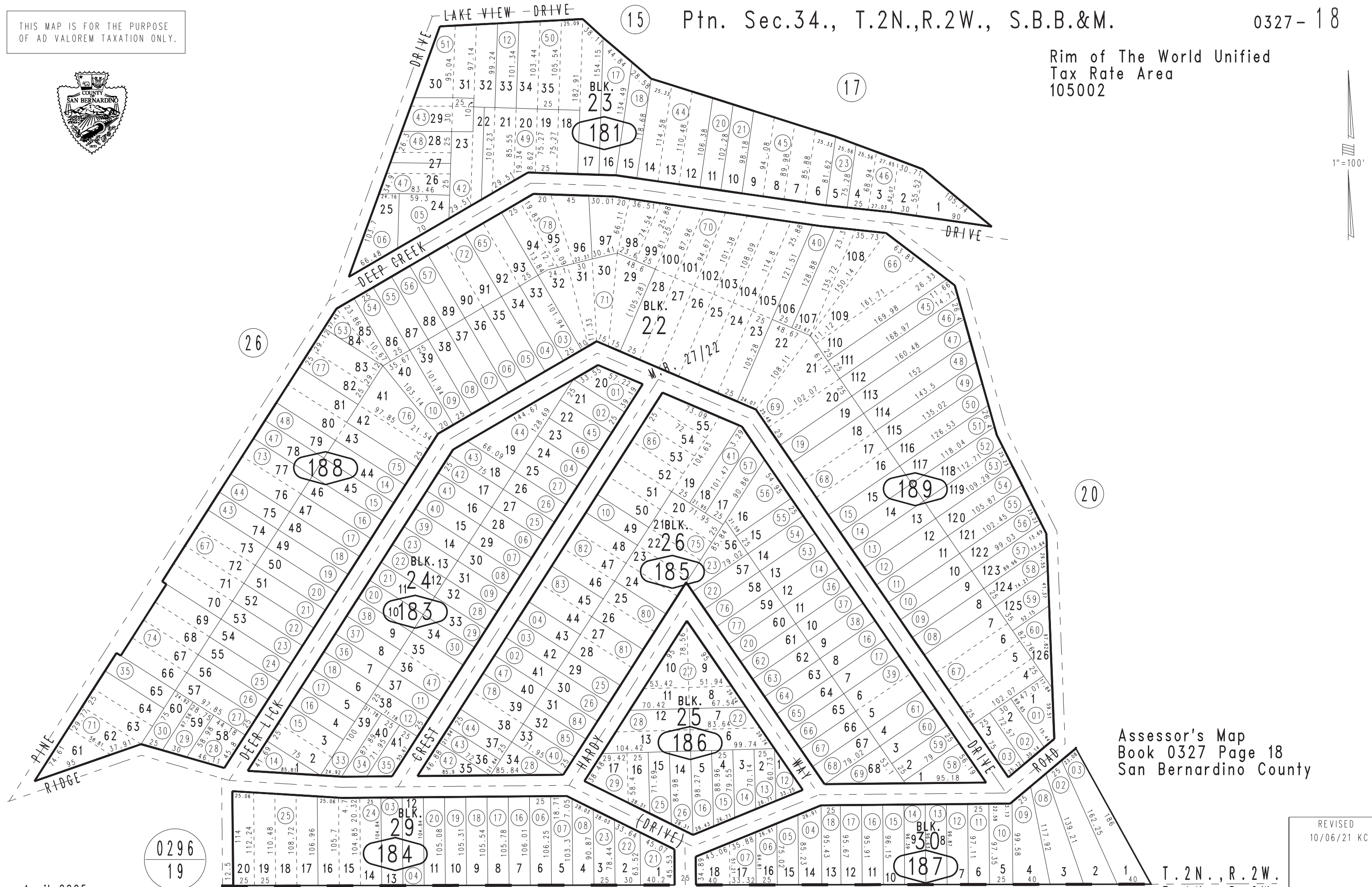
THIS MAP IS FOR THE PURPOSE OF AD VALOREM TAXATION ONLY.



Ptn. Sec.34., T.2N.,R.2W., S.B.B.&M.

0327-18

Rim of The World Unified Tax Rate Area 105002



Assessor's Map Book 0327 Page 18 San Bernardino County

REVISED 10/06/21 KC

April 2005

0296 19

Ptn. Tr. No. 1874, Arrow-Bear Park, Unit No. 1, M.B. 27/22

T. 2 N., R. 2 W. T. 1 N., R. 2 W.