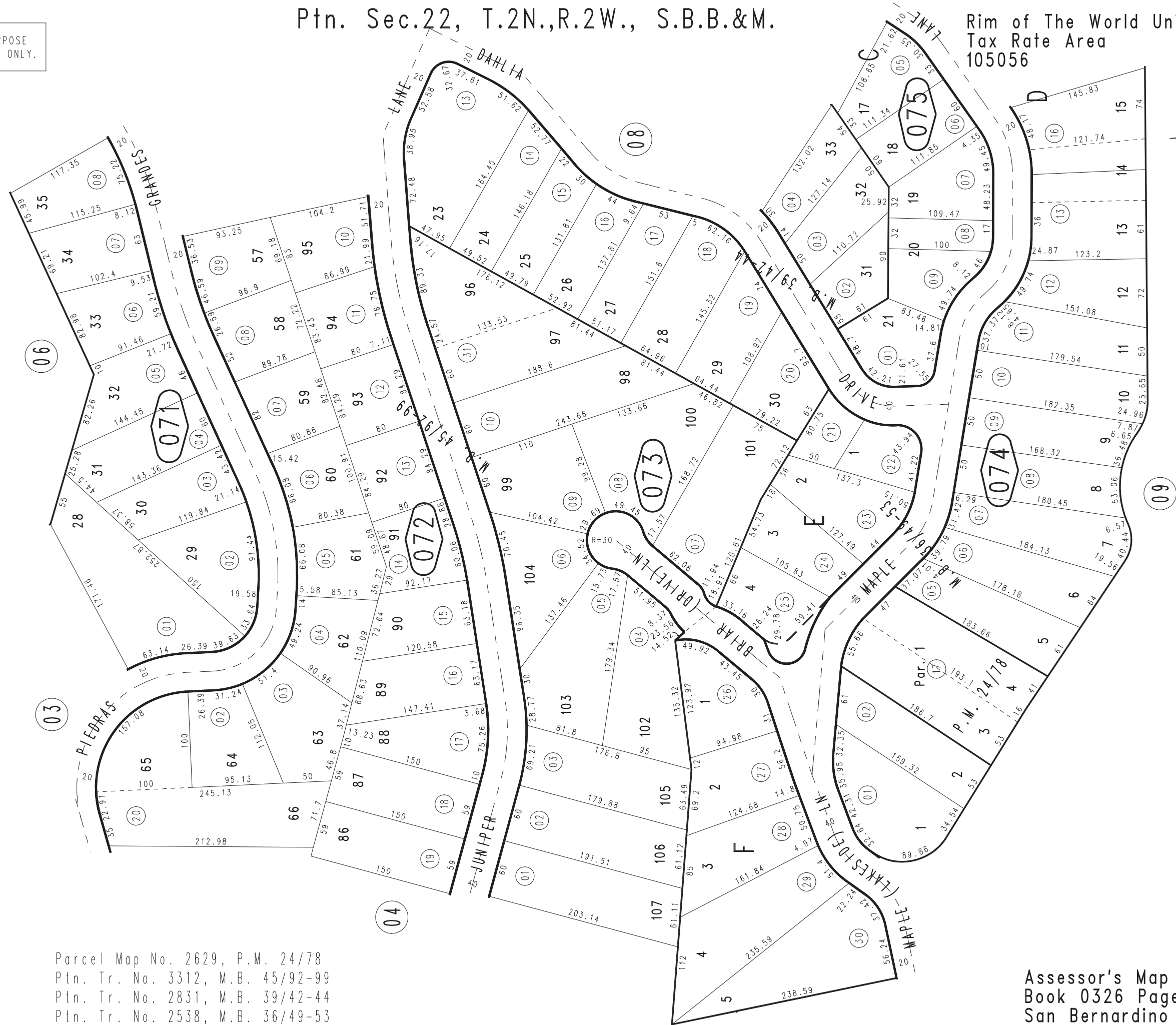
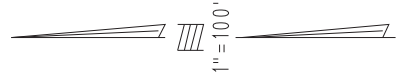


THIS MAP IS FOR THE PURPOSE OF AD VALOREM TAXATION ONLY.



Parcel Map No. 2629, P.M. 24/78
Ptn. Tr. No. 3312, M.B. 45/92-99
Ptn. Tr. No. 2831, M.B. 39/42-44
Ptn. Tr. No. 2538, M.B. 36/49-53

March 2005

Assessor's Map
Book 0326 Page 07
San Bernardino County

REVISED
08/08/22 KC