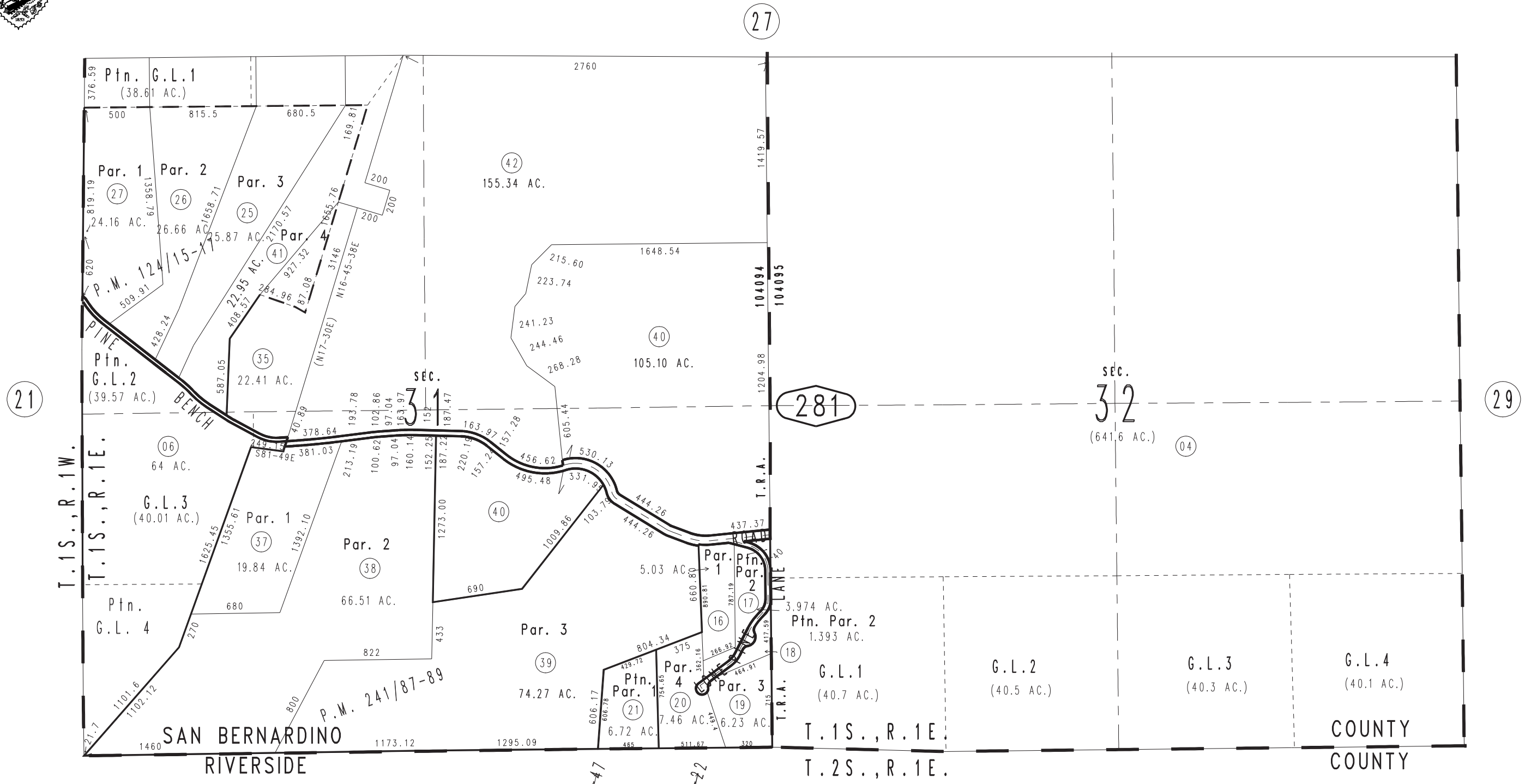
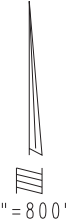


THIS MAP IS FOR THE PURPOSE OF AD VALOREM TAXATION ONLY.

Sec.31 & 32, T.1S.,R.1E., S.B.B.&M.

Redlands Unified Tax Rate Area 104094 104095

0324-28



March 2005

Parcel Map No. 19164, P.M. 241/87-89  
Parcel Map No. 11252, P.M. 148/21-22  
Parcel Map No. 10630, P.M. 124/15-17  
Ptn. Parcel Map No. 9951, P.M. 108/46-47

Assessor's Map Book 0324 Page 28 San Bernardino County

REVISED 09/08/21 RU 10/13/23 KC