

THIS MAP IS FOR THE PURPOSE
OF AD VALOREM TAXATION ONLY.

Sec.19&20, T.1S.,R.1E., S.B.B.&M.

Redlands Unified
Tax Rate Area
104022

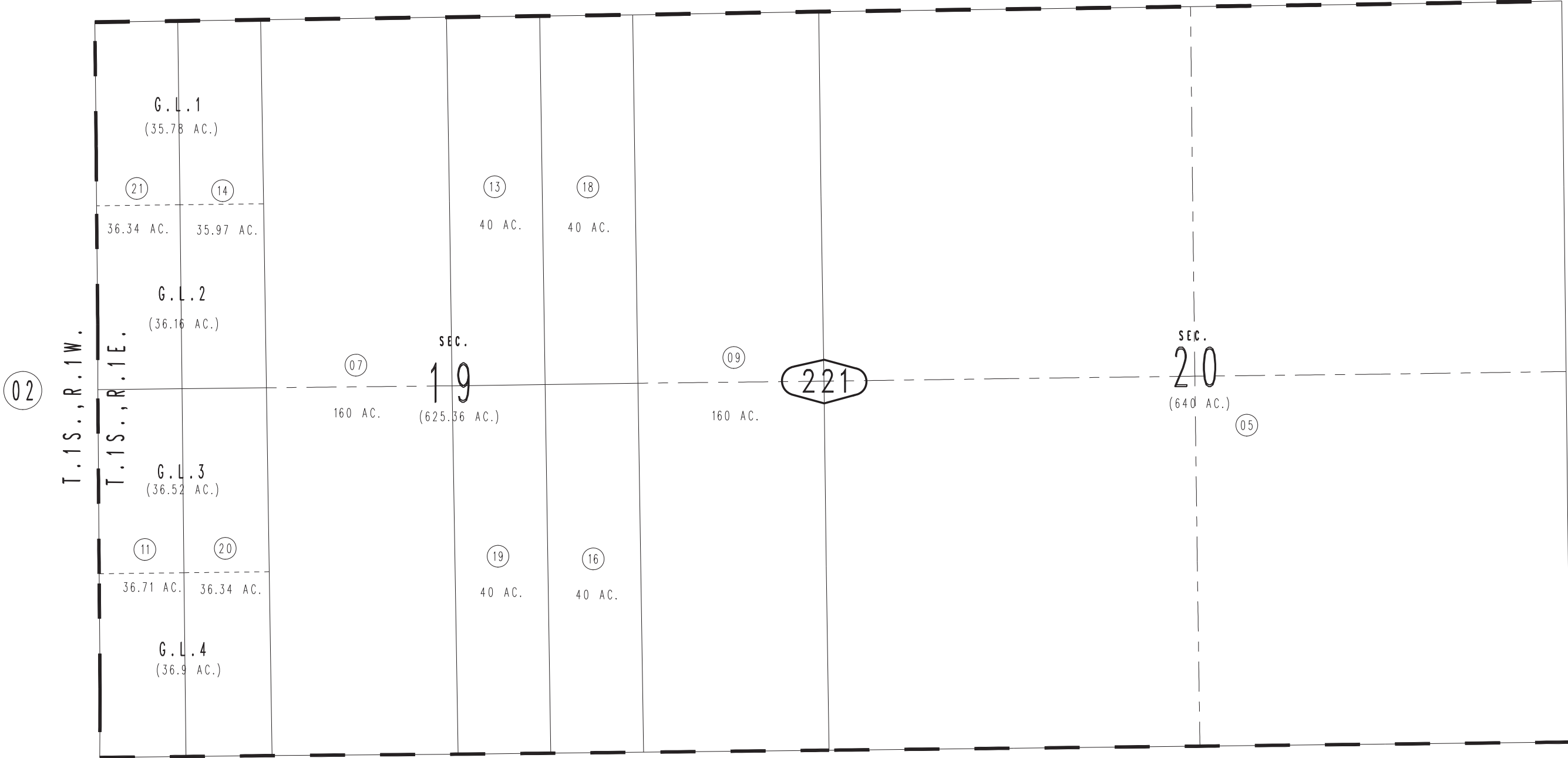
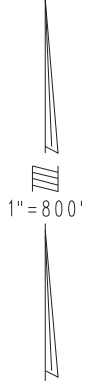


0323
49

0323
50

0323
33

0323
43



02

T.1S.,R.1W.
T.1S.,R.1E.

G.L.1
(35.78 AC.)

G.L.2
(36.16 AC.)

G.L.3
(36.52 AC.)

G.L.4
(36.9 AC.)

SEC.
19

SEC.
20

221

23

27