

THIS MAP IS FOR THE PURPOSE OF AD VALOREM TAXATION ONLY.

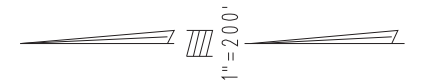
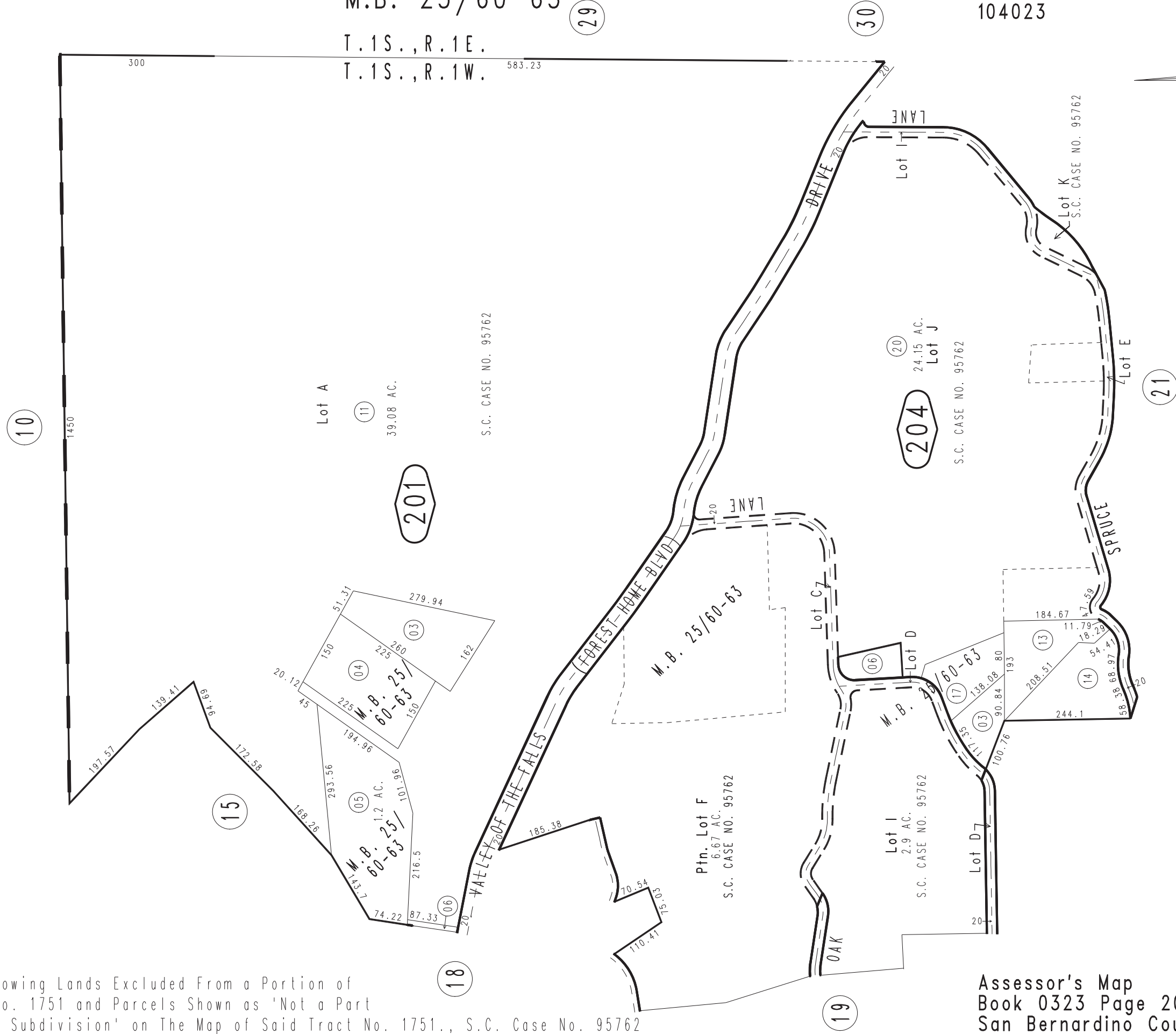


Ptn. Forest Home Tract, Tract No. 1751 M.B. 25/60-63

Redlands Unified
Tax Rate Area
104023

0323-20

T. 1 S., R. 1 E.
T. 1 S., R. 1 W.



PLAT Showing Lands Excluded From a Portion of Tract No. 1751 and Parcels Shown as 'Not a Part of This Subdivision' on The Map of Said Tract No. 1751., S.C. Case No. 95762

May 2005

Assessor's Map
Book 0323 Page 20
San Bernardino County

REVISED
12/28/17 RU