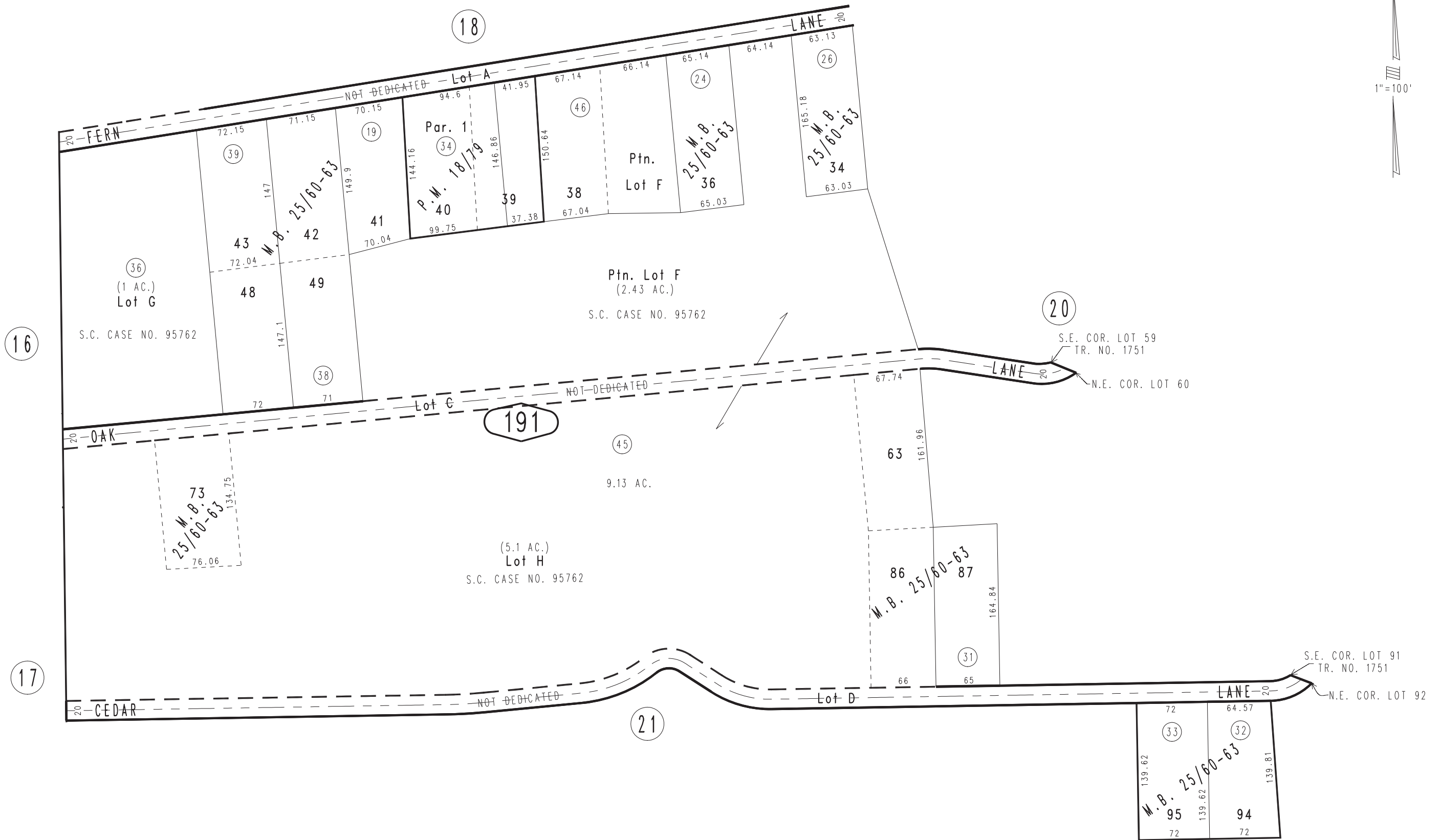


THIS MAP IS FOR THE PURPOSE  
OF AD VALOREM TAXATION ONLY.

# Ptn. Forest Home Tract, Tract No. 1751 M.B. 25/60-63

Redlands Unified  
Tax Rate Area  
104023

0323-19



Ptn. Parcel Map No. 1901, P.M. 18/79  
PLAT Showing Lands Excluded From a Portion of Tract No. 1751 and Parcels Shown as  
'Not a Part of This Subdivision' on The Map of Said Tract No. 1751., S.C. Case No. 95762

May 2005

Assessor's Map  
Book 0323 Page 19  
San Bernardino County

REVISED  
05/05/10 RM